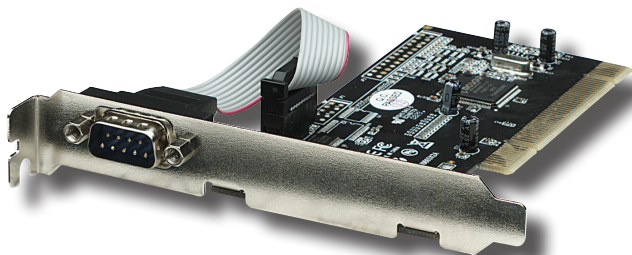


SERIAL PCI CARD USER MANUAL

MODEL 158206




MANHATTAN™

MAN-158206-UM-0409-02

INTRODUCTION

Thank you for purchasing this MANHATTAN® Serial PCI Card, Model 158206.

Compatible with most RS-232 peripherals, the MANHATTAN Serial PCI Card with one external DB9 port is an ideal solution for attaching a serial device — modems, barcode scanners, printers and more — through a single PCI card. Its high-speed 16C550/16C450 UART serial DB9 Com port fully supports PCI IRQ sharing even if accessed simultaneously to help save valuable resources for other expansion cards. Universal bus power design for 5 V and 3.3 V allows for greater variety of peripheral devices.

The easy-to-follow instructions in this manual help make installation of the card quick and simple, so you'll also soon be enjoying the benefits of these features:

- Adds a high-speed 16C550/16C450 UART serial DB9 Com port to desktop computers
- Maximum 115.2 kbps throughput
- Universal bus power design for 5 V and 3.3 V
- Fully supports PCI IRQ sharing
- Automatically selects IRQ and Com address
- Lifetime Warranty

NOTE: To ensure proper operation, make sure that you complete the driver installation before proceeding with the hardware installation.

System Requirements

- Windows 2000/XP/Server 2003/Vista 32/64-bit
- Available punch-out expansion and PCI slots

Package Contents

- Serial PCI Card with External DB9 Port
- User manual and driver CD

DRIVER INSTALLATION

IMPORTANT: Make sure that you've completed the driver installation before proceeding with the hardware installation.

Windows 2000 / XP / Server 2003

1. Insert the included driver CD in the PC's CD-ROM drive.
2. On the desktop, click "Start," then click "Run."
3. Enter "D:\PCI_IO\MCS9865\XP\PCISetup.exe," then click "OK."
4. Click "Install" to install the drivers.
5. Click "Exit" to complete the driver installation.
6. Shut down the PC.
7. Place the PCI card into PCI slot (see Hardware Installation below), then power on the system.
8. Once the system boots, Windows will automatically start installing the driver software.

Windows XP-x64 / Server 2003-x64

1. Insert the included driver CD in the PC's CD-ROM drive.
2. Enter "D:\PCI_IO\MCS9865\XP64\PCISetup.exe," then click "OK."
3. Click "Install" to install the drivers.
4. Click "Exit" to complete the driver installation.
5. Shut down the PC.
6. Place the PCI card into PCI slot (see Hardware Installation below), then power on the system.
7. Once the system boots, Windows will automatically start installing the driver software.

Windows Vista

1. Insert the included driver CD in the PC's CD-ROM drive.
2. Enter "D:\PCI_IO\MCS9865\Vista32\PCISetup.exe," then click "OK."
3. Click "Install" to install the drivers.
4. Click "Exit" to complete the driver installation.
5. Shut down the PC.
6. Place the PCI card into PCI slot (see Hardware Installation below), then power on the system.
7. Once the system boots, Windows will automatically start installing the driver software.

Windows Vista-x64

1. Insert the included driver CD in the PC's CD-ROM drive.
2. Enter "D:\PCI_IO\MCS9865\Vista64\PCISetup.exe," then click "OK."
3. Click "Install" to install the drivers.
4. Click "Exit" to complete the driver installation.
5. Shut down the PC.
6. Place the PCI card into PCI slot (see Hardware Installation below), then power on the system.
7. Once the system boots, Windows will automatically start installing the driver software.

Verify Windows Driver Installation

1. From the Control Panel, go to System Properties and click "Device Manager."
2. Find the "Ports (COM & LPT)" listing and confirm that one "High-Speed PCI Serial Port" item is displayed.

HARDWARE INSTALLATION

IMPORTANT: Make sure that you've completed the driver installation before proceeding with the hardware installation.

1. Turn off your computer.
2. Unplug the power cord and remove your computer's cover.
3. Remove the slot bracket from an available PCI slot.
4. To install the card, carefully align the card's bus connector with the selected PCI slot on the motherboard. Push the board down firmly.
5. Replace the slot bracket's holding screw to secure the card.
6. Replace the computer cover and reconnect the power cord.

SPECIFICATIONS

Standards and Certifications

- CE
- FCC
- RS-232c
- PCI 2.3
- WEEE

General

- 1 serial DB9 male connection
- Maximum 115.2 kbps throughput
- MosChip 9865 chipset
- Requires available punch-out expansion and PCI slots
- Windows 2000/XP/Server 2003/Vista 32/64-bit compatible

Bus

- PCI 2.3 32-bit, 33 MHz
- Supports 32/64-bit PCI slot
- 5 / 3.3 V bus power

Physical

- Dimensions: 124 x 122 x 23 mm (4.9 x 4.8 x 0.9 in.)
- Weight: 51 g (1.8 oz.)



MANHATTANTM

BRINGING COMPUTERS TO LIFE

MANHATTAN[®] offers a complete line
of PC Components, Peripherals, Cables and Accessories.

Ask your local computer dealer for more information
or visit us online at

www.manhattan-products.com

Copyright © MANHATTAN

All products mentioned are trademarks or registered trademarks of their respective owners.