



Specification

EC-80160XX

EC-80220XX

THERMAL RECEIPT PRINTER





Safety Notice

- * Don't touch the Head of printer with anything.
- * Don't touch the cutter blade.
- * Don't bend the power cord excessively or place any heavy objects onto it.
- * Don't use the printer when it is out of order. This can cause a fire or and electrocution.
- * Only use the power cord excessively or place any heavy objects onto it.
- * When connecting or disconnecting the plug, always hold the plug-not the cord.
- * Keep the desiccant out of children's reach.
- * Use only approved accessories and do not try to disassemble, repair or remodel it for yourself.
- * Install the printer on the stable surface. Choose firm, level surface where avoid vibration.
- * Don't let water or other foreign objects in the printer.
- * Don't connect a telephone line into the peripheral drive connector.
- * We recommend that you unplug the printer from the power outlet if no use it for long periods.

Available fields

- * Print POS system Receipts
- * Print EFT POS system Receipts
- * Print Gym, Post, hospital, civil aviation system Receipts
- * Print Inquiry, Service system Receipts
- * Print Instrument test Receipts
- * Print Tax, Tab Receipts

Main Features



- * Command protocol is based on ESC/POS standard
- * Low-noise thermal printing.
- * Various Layouts are possible by using page mode.
- * Repeated operation and copy printing are possible.
- * Character font size optional.
- * Easy paper-roll installation.
- * Easy paper jam clearance.
- * Easy maintenance for tasks such as head cleaning.
- * Built-in interface provides control capability for cash drawer

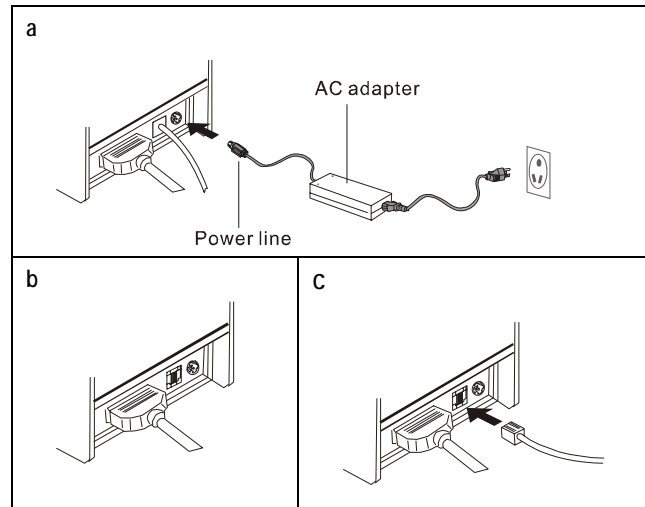
Technique Spec.

Print method	Thermal line printing
Print speed	160&220mm/ sec.
OPOS Support	Support OPOS instruction (GP-80220XX series)
Paper width	79.5±0.5mm
Print columns	576dots/line
Character	ANK Character: Font A: 12*24dots Font B: 9*17dots Simplify/Traditional: 24*24 dots
Print command	Compatible with ESC/POS
Interface	Parallel/Serial (RS232C)/USB/ Wireless/Ethernet
Barcode mode	UPC-A/UC-E/JAN13(EAN13)/JAN8(EAN8)/CODE39/ CODABAR/CODE93/CODE128
Reliability print	100 kilometers
Paper thickness	0.06-0.08mm
Adaptor power input	AC 110V/220V, 50-60Hz
Adaptor power output	DC24V/2.5A
Printer power input	DC24V/2.5A
Cash Drawer	DC 12-24V/1A
Work Temperature	0-45°C, Dampness: 10-80%
Storage temperature	-10-50°C, Dampness: 10-90%

Connection

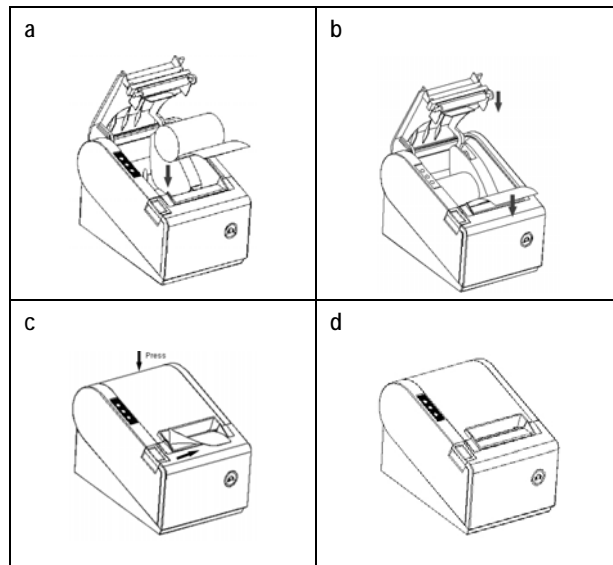


- a. Connect the adapter cable to power connector of the printer.
- b. Connect the interface cable to the connector on the rear panel of the printer.
- c. Connect the cash drawer's RJ-11 phone jack to the connector on the rear panel.



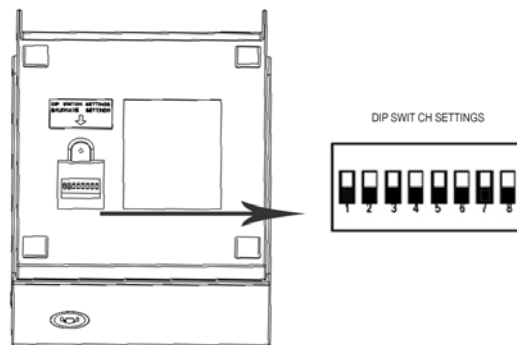
Paper Roll Installation

- a. Open the top cover, install the paper roll as the picture showing direction.
- b. Set the paper roll into the hollow, and pull on the leading edge of the paper toward you as shown:
- c. Press the center of printer cover firmly to prevent paper miss-loading.
- d. Tear off the paper outside the cover as shown.



Set Print Mode (DIP Switch)

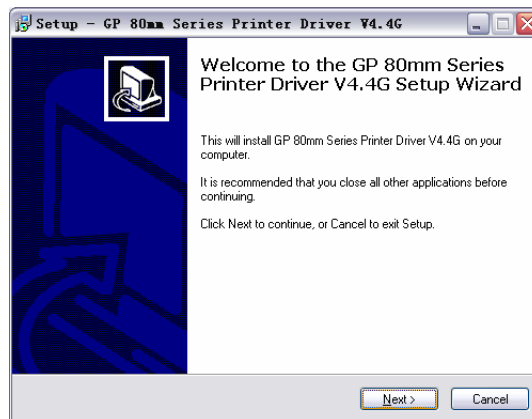
Set print mode by the DIP Switch, such as Black mark, Cutter, Language, Beep, Density, Speed mode...



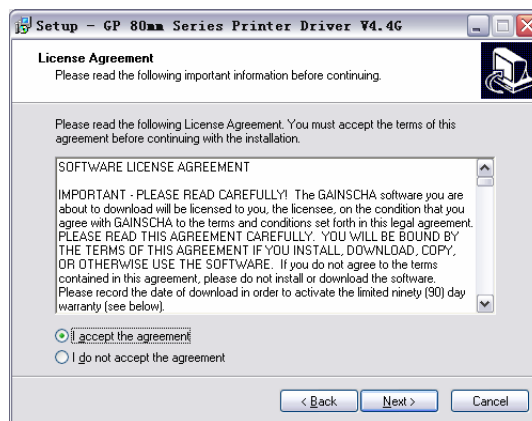
Driver Installation



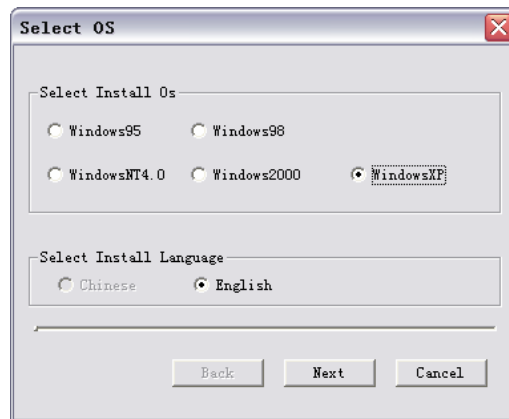
- a. Insert the bundled CD disk into the CD-ROM drive, in the CD-Rom menu, click DRV80EN V4.4G file to begin driver installation



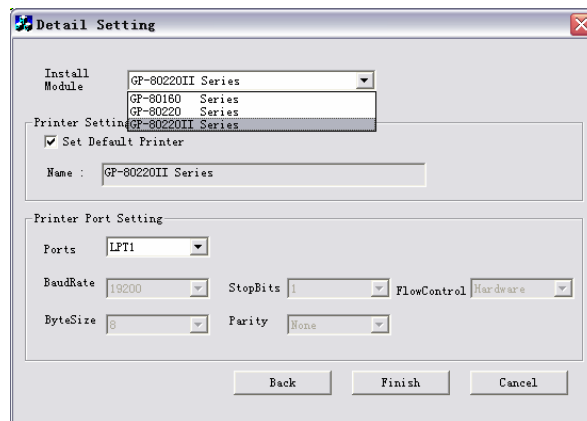
- b. Please read and accept the principle first, and then continue installation.



c. Please choose the OS that matches with your computer system and press next.



d. Please select GP-80220II Series for Install module.





*Welcome to choose our "EC PRINTER" mini
printers, if you have some questions and advices for
our company, please contact with us directly or visit
<http://www.eclineproducts.com>, we are ready to
supply the best service for you!*