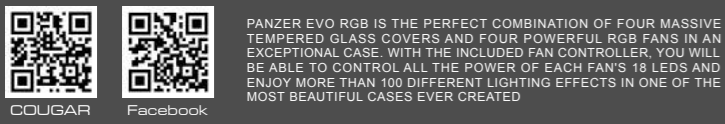


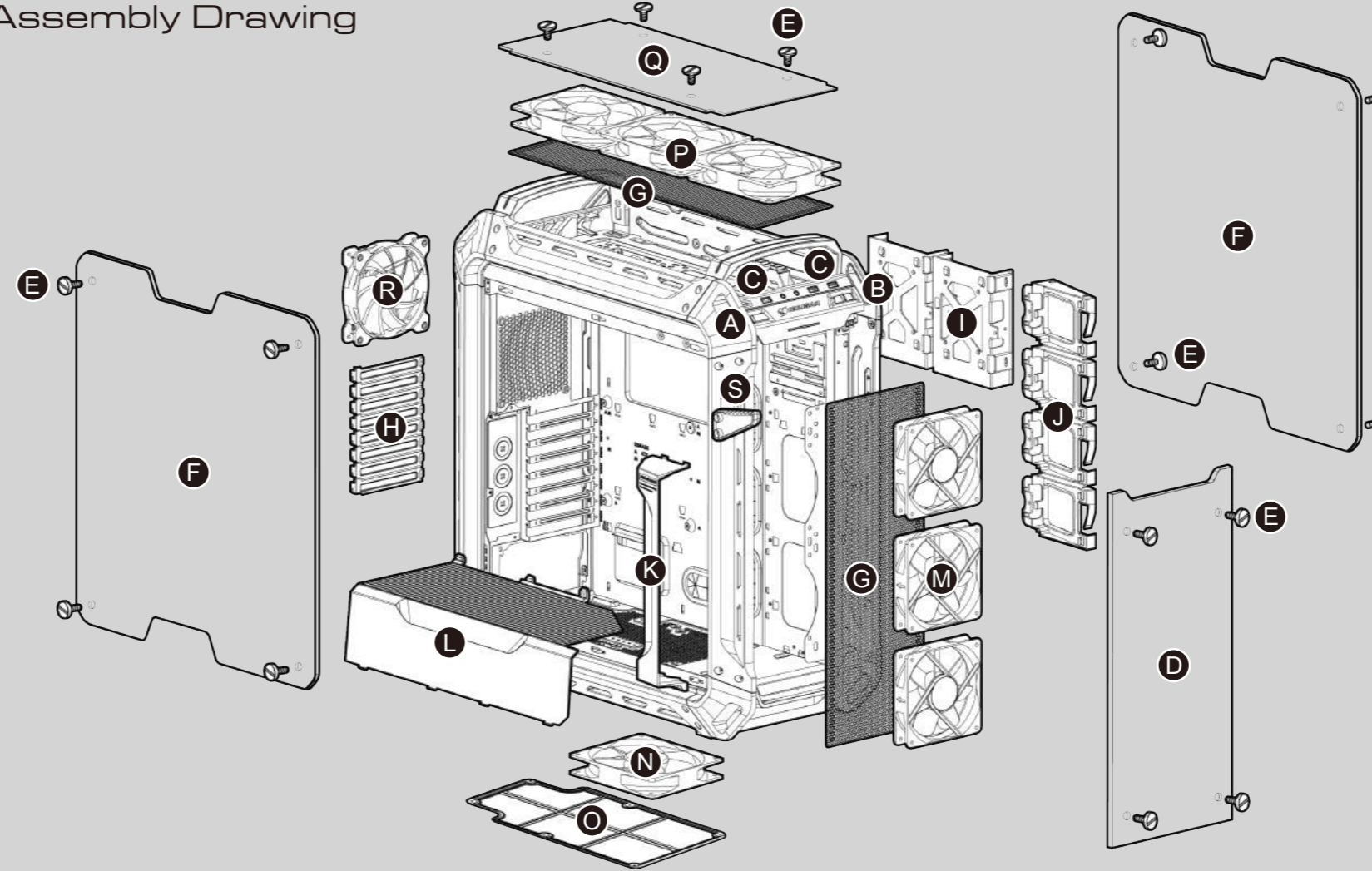


PANZER

EVO RGB THE CRYSTALLINE TITAN



Assembly Drawing



- A** Power button / Reset button
- B** Fan controller
- C** USB 3.0 / USB 2.0 / HD audio ports
- D** Tempered glass front panel
- E** Tool-less screw
- F** Tempered glass side panel
- G** Fan filter
- H** Vented slot cover
- I** 3.5" HDD trays (compatible with 2.5" HDD/SSD)
- J** 2.5" HDD trays
- K** Air Guide
- L** Power supply cover
- M** 3 x 140/120mm fans for front panel (3 x 120mm RGB PWM fans pre-installed)
- N** 1 x 140/120mm fan for bottom panel (optional, purchased separately)
- O** Air filter on bottom cover to prevent dust from entering the power supply
- P** 2 x 140mm / 3 x 120mm fans for top panel (optional, purchased separately)
- Q** Tempered glass top panel
- R** 1 x 120mm RGB PWM fan for rear panel (pre-installed)
- S** Headphone hook

ENGLISH
PANZER EVO THE CRYSTALLINE TITAN
 • Four tempered glass covers (front/top/left/right)
 • Support for six different motherboard form factors (up to E-ATX)
 • Up to four double slot 390mm graphics cards
 • Up to eight fans and four water cooling radiators
 • COUGAR RGB Core Box included: Control your COUGAR RGB fans and LED strips with remote control!
 • COUGAR Vortex RGB PWM fans included, with 18 LEDs per fan and 100 lighting effects

DEUTSCH
PANZER EVO DER KRISTALLENE TITAN
 • Vier Abdeckungen aus Hartglas (vorne/oben/links/rechts)
 • Unterstützt sechs verschiedene Motherboard-Formfaktoren (bis E-ATX)
 • Bis zu vier Doppelsteckplatz-390-mm-Grafikkarten
 • Bis zu acht Lüfter und vier Flüssigkühler
 • COUGAR RGB Core Box beinhaltet: Steuern sie ihre COUGAR-RGB-Lüfter und LED-Streifen per Fernbedienung!
 • COUGARs Vortex-RGB-PWM-Lüfter inklusive, mit 18 LEDs pro Lüfter und 100 Lichteffekten

РУССКИЙ
PANZER EVO RGB КРИСТАЛЛИЧЕСКИЙ ТИТАН
 • Четыре боковые стенки из закаленного стекла (спереди / сверху / слева / справа)
 • Поддержка шести различных форм-факторов материнской платы (до E-ATX)
 • До четырех видеокарт с двумя слотами длиной до 390 мм
 • До восьми вентиляторов и четырех радиаторов водяного охлаждения
 • COUGAR RGB Core Box в комплекте: Управляйте своими вентиляторами и светодиодами COUGAR RGB с пультом дистанционного управления!
 • В комплекте вентиляторы COUGAR Vortex RGB PWM с 18 светодиодами на вентилятор, имеющие 100 световых эффектов

FRANÇAIS
PANZER EVO RGB LE TITANE CRISTALLIN
 • Quatre couvercles en verre trempé (avant/supérieur/gauche/droite)
 • Prise en charge pour six facteurs de forme du carte mère différents (jusqu'à E-ATX)
 • Jusqu'à quatre cartes graphiques à double fente 390 mm
 • Jusqu'à huit ventilateurs et quatre radiateurs de refroidissement par eau
 • COUGAR RGB Core Box inclus : contrôlez vos ventilateurs RGB COUGAR et vos rubans LED avec la télécommande!
 • Ventilateurs RGB PWM COUGAR Vortex inclus, avec 18 LED par ventilateur et 100 effets lumineux

ESPAÑOL
PANZER EVO RGB EL TITÁN CRISTALINO
 • Cuatro cubiertas de vidrio templado (frontal/superior/izquierda/derecha)
 • Soporta seis formatos diferentes de placa madre (hasta E-ATX)
 • Hasta cuatro tarjetas gráficas de doble ranura de 390mm
 • Hasta ocho ventiladores y cuatro radiadores de refrigeración líquida
 • COUGAR RGB Core Box incluida: ¡Controla tus ventiladores RGB y Tiras RGB de Marca COUGAR con Control Remoto!
 • Ventiladores COUGAR Vortex RGB PWM incluidos, con 18 LED por ventilador y 100 efectos de iluminación

Case Type	Full Tower
Motherboard Type	Mini ITX / Micro ATX / ATX / CEB / L-ATX / E-ATX (E-ATX upto 12"x11")
Dimensions (WxHxD)	266mm x 612mm x 556mm (10.5" x 24" x 21.9")
Case Drive Bays	3.5" : 2 / 2.5" : 4+2 (converted from 3.5" drive bays)
Expansion slots	8
I/O Panel	USB 3.1 Gen2 Type-C , USB3.0 x 2 / USB2.0 x 1 Mic x 1 / Audio x 1 , Fan Controller
Total Fan	Max. 8

PORTUGUÊS
PANZER EVO RGB O TITÃ DE VIDRO TEMPERADO
 • Quatro tampas de vidro temperado (frontal / superior / esquerda / direita)
 • Suporta seis formatos diferentes de placa-mãe (até E-ATX)
 • Até quatro placas de vídeo de slot duplo de até 390mm de comprimento
 • Até oito ventoinhas e quatro radiadores de resfriamento líquido
 • COUGAR RGB Core Box inclusa: Controle suas ventoinhas COUGAR RGB e faixas de LED com controle remoto
 • Ventoinhas COUGAR Vortex RGB PWM inclusas, com 18 LEDs por ventoinha e 100 efeitos de iluminação

ITALIANO
PANZER EVO RGB IL TITANO DI CRISTALLO
 • Quattro pannelli in vetro temperato (Anteriore / superiore / sinistra / destra)
 • Supporta sei differenti tipi di schede madri (fino a E-ATX)
 • Fino a quattro slot doppi per schede video da 390mm
 • Fino a 8 ventole e 4 dissipatori a liquido
 • Inclusa una COUGAR RGB Core Box: Controlla i tuoi ventilatori COUGAR RGB e le tue strisce LED con un telecomando!
 • Inclusi ventilatori RGB PWM COUGAR Vortex, con 18 LED per ventilatore e 100 effetti luminosi

日本語
PANZER EVO RGB クリスタルのような質感を特徴とするゲーミングPCケース
 • 4面強化ガラスパネル採用 (フロント・トップ・左右両サイド)
 • 6種類のマザーボードフォームファクタ (最大E-ATXまで) に対応できます
 • 最大4つのダブルスロットの390mmグラフィックスカードに対応できます
 • 最大8つのファンと4つの水冷ラジエーターを搭載可能です
 • COUGAR RGB Core Boxは付属しています: リモートコントロールでCOUGAR RGBファンとLEDストリップのRGBカラーを変更できます
 • Cougar Vortex RGB PWMファンを標準搭載しています。ファンあたり18個のLEDを搭載し、100種類のRGBカラーを変更することが可能

한국어
PANZER EVO RGB 크리스탈라인 타이탄
 • 4 개의 강화 유리 커버 (앞 / 위 / 왼쪽 / 오른쪽) • 최대 4 개의 이중 슬롯 390mm 그래픽 카드
 • 여섯 가지 메인보드 폼 팩터 (E-ATX까지) 지원 • 최대 8 개의 팬과 4 개의 수냉식 냉각기
 • COUGAR RGB Core Box 포함 : COUGAR RGB 팬 및 LED 스트림을 리모콘으로 제어하십시오!
 • COUGAR Vortex RGB PWM 팬 포함, 팬 당 18 개의 LED 및 100 개의 조명 효과 포함

中文
PANZER EVO RGB 水晶般閃耀的电竞机箱
 • 四面钢化玻璃侧盖(前/上/左/右) • 支援4组高达390公厘的显卡双插槽
 • 支援6种规格尺寸的主机板(适用E-ATX 最大尺寸) • 支援高达8个风扇和4个水冷散热器
 • 内附COUGAR RGB Core Box: 使用遥控器立即变换COUGAR RGB风扇与LED灯条的背光效果!
 • 内建COUGAR Vortex RGB PWM 风扇, 每个风扇都有18颗LED灯与100种背光效果

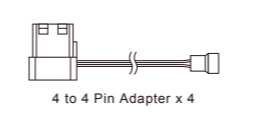
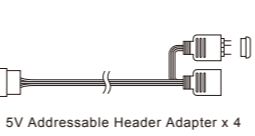
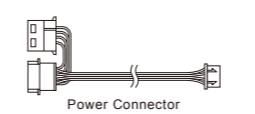
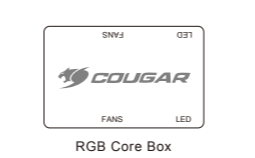
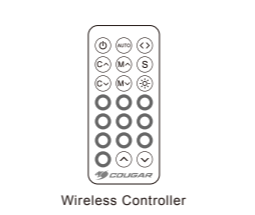
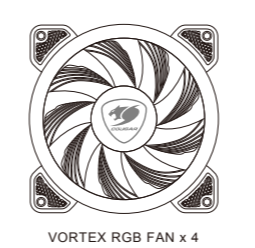
تعليمات التركيب و الأمان:

• عند التركيب أو التفكيك يجب التأكد من أن جميع الأسلاك متصلة عن الكهرياء.
 • يجب اتخاذ الاحترازاات اللازمة لمنع الصعق الكهربائي.
 • يجب تركيب كل قطعة بحذر و بمكانها المناسب.
 • يجب اتخاذ الاحترازاات اللازمة لمنع الصعق الكهربائي.
 • يجب ارتداء الملابس المناسبة أثناء تركيب/ تجميع الكمبيوتر.

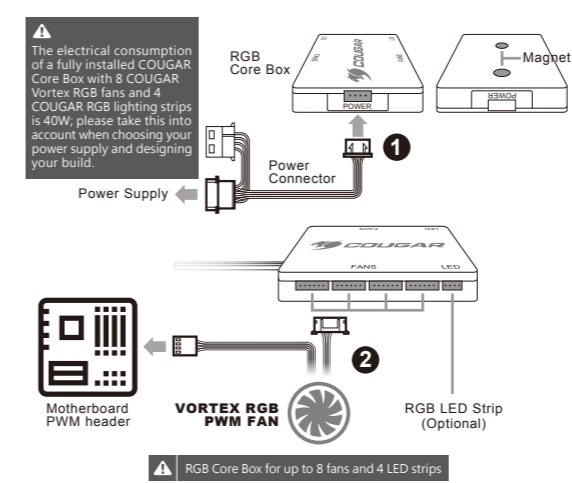
Cooling Fans	Front : 120mm x 3 / 140mm x 3 Top : 120mm x 3 / 140mm x 2 Rear : 120mm x 1 Bottom : 120mm x 1 / 140mm x 1
Fan Pre-installed	Front : 120mm RGB PWM fan x 3 Rear : 120mm RGB PWM fan x 1
Water Cooling Support	Front : 360mm / 280mm / 240mm / 140mm / 120mm Top : 360mm / 280mm / 240mm / 140mm / 120mm Rear : 120mm x 1 Bottom : 140mm x 1 / 120mm x 1
Max. Graphic Card Length	390mm
Max. CPU Cooler Height	170mm
Max. PSU Length	220mm

Specifications may vary based on different regions

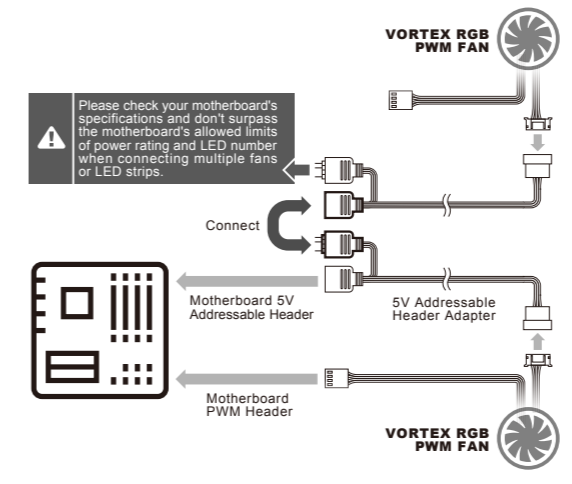
Cooling contents



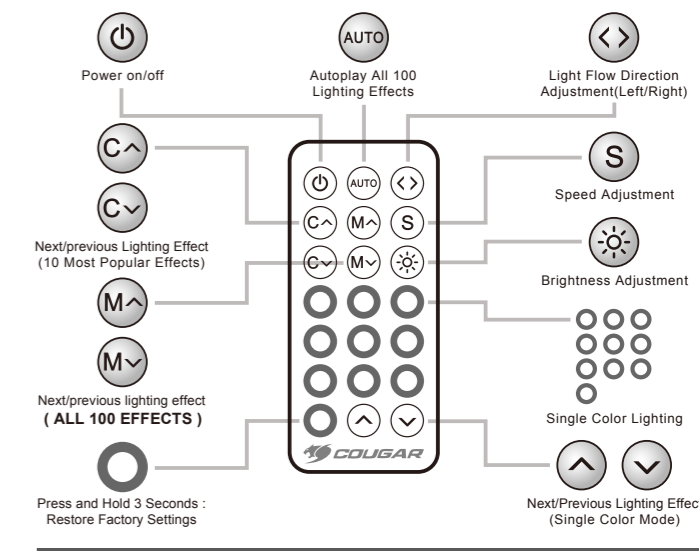
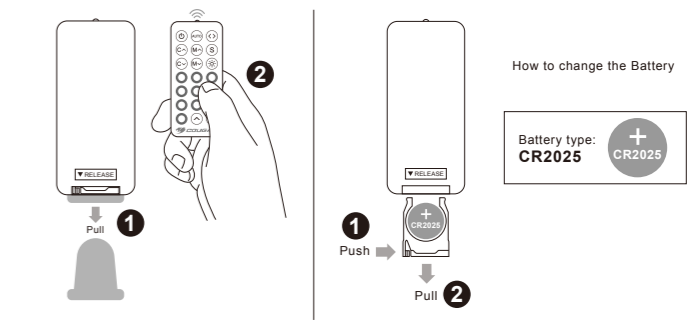
Installation



5V Addressable header adapter installation

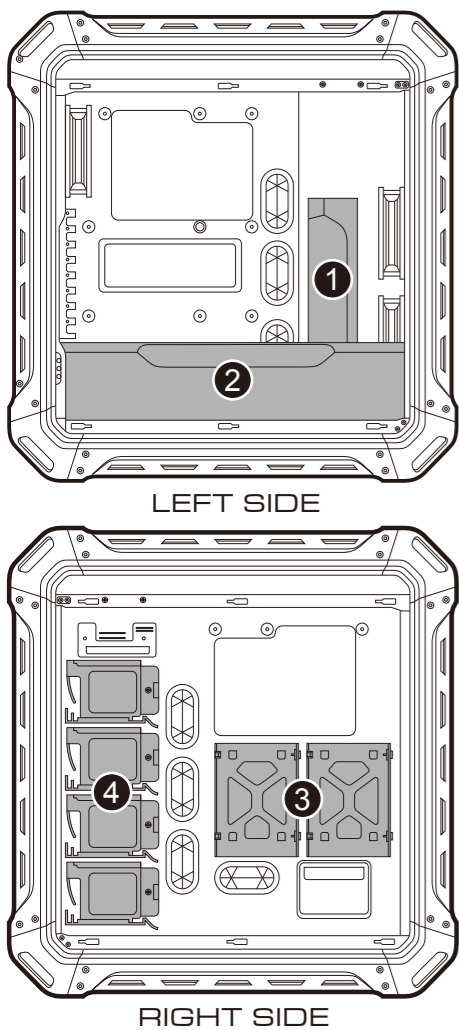


Wireless controller

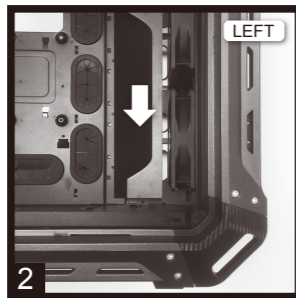
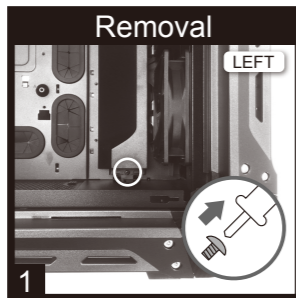


Press and Hold 3 Seconds : Bind your RGB Core Box to this Controller
 (If a nearby controller is interfering with your RGB Core Box , you can make use of the binding functionality to prevent that RGB Core Box from receiving commands from any controller other than the one it's bound to)

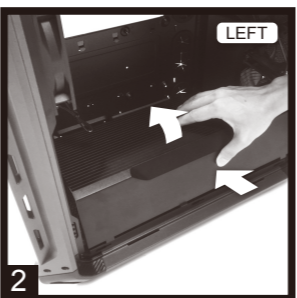
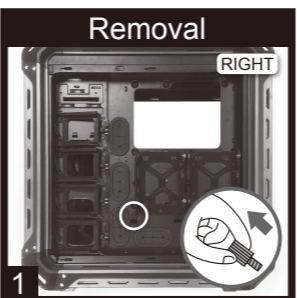
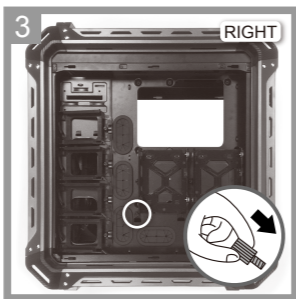
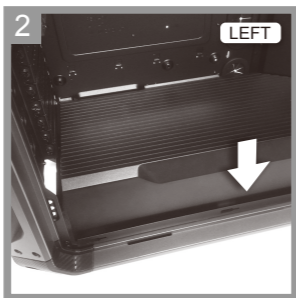
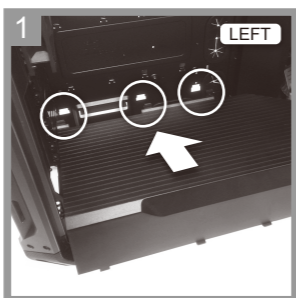
Press and Hold 3 Seconds : Unbind Your RGB Core Box
 (If you lose your controller after binding, use the new Controller to unbind the RGB Core Box before using it)



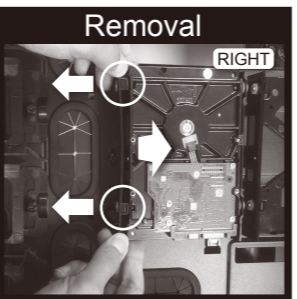
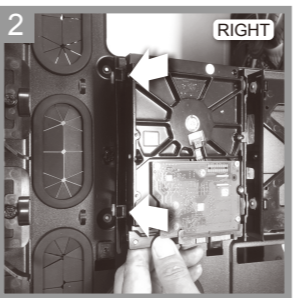
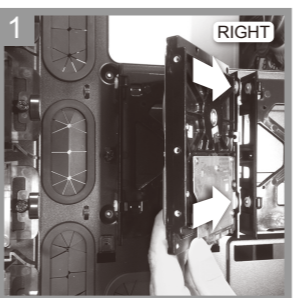
1 Removing the air guide



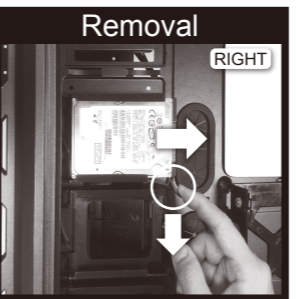
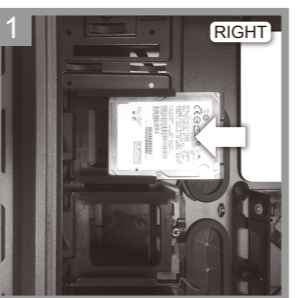
2 Installing/Removing the power supply cover



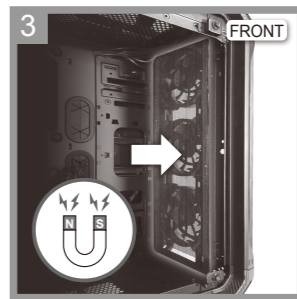
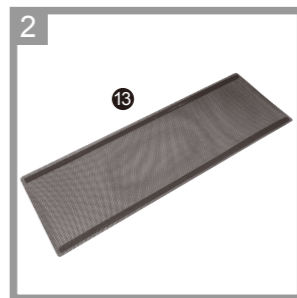
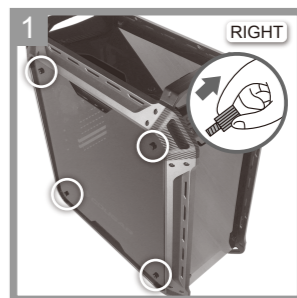
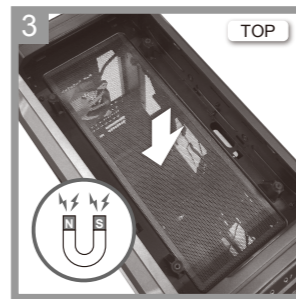
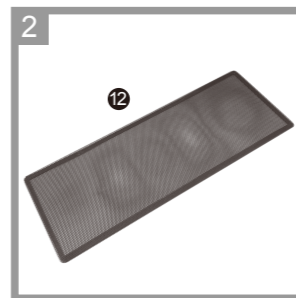
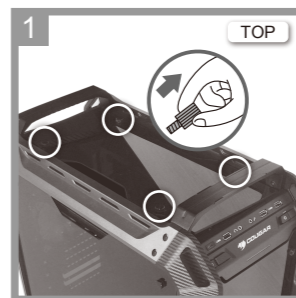
3 Installing an internal 3.5" HDD



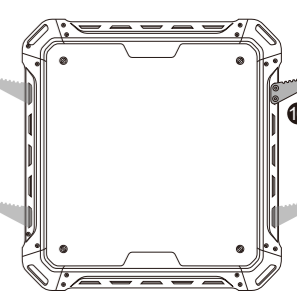
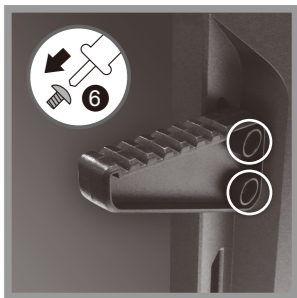
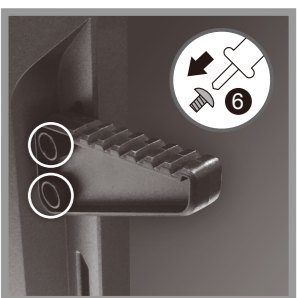
4 Installing an internal 2.5" device



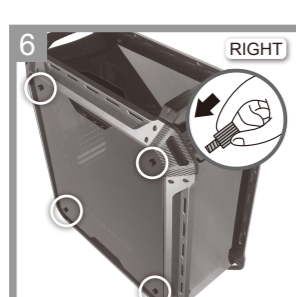
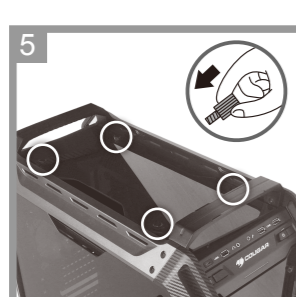
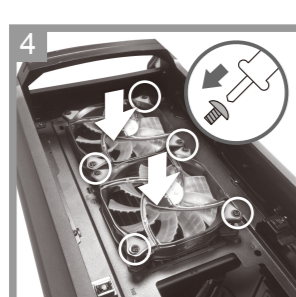
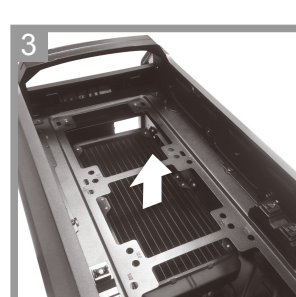
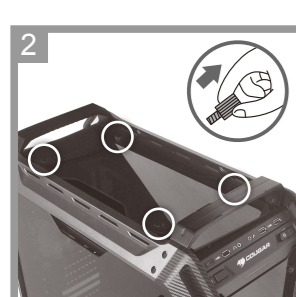
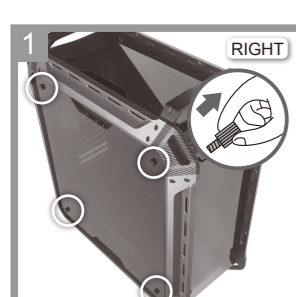
Installing a fan filter (top / front)



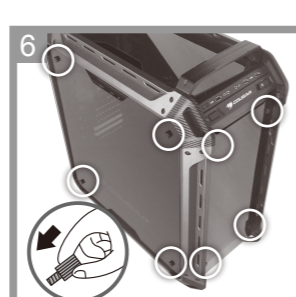
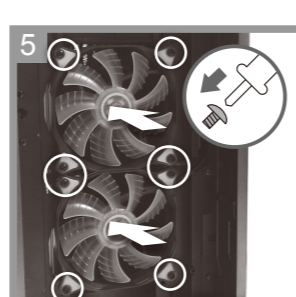
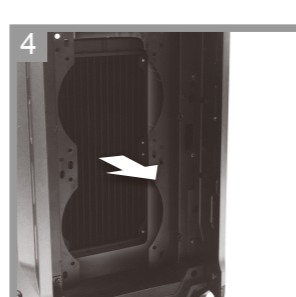
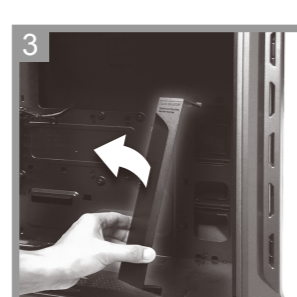
Installing the headphone hook



Installing a water cooler (top)

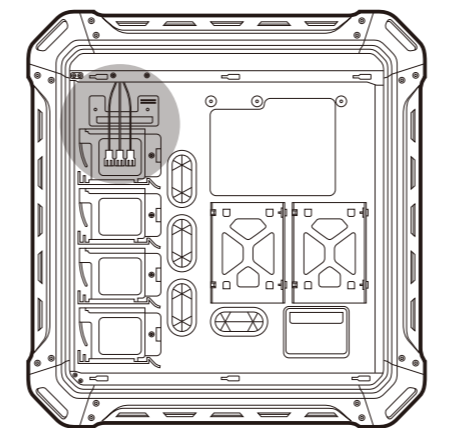


Installing a water cooler (front)

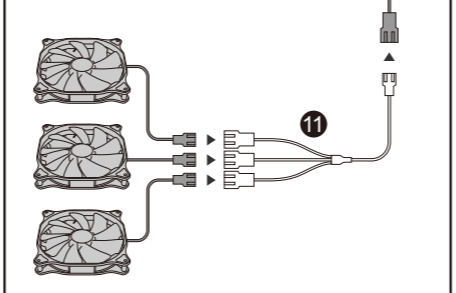


Setting up fan control

Through the use of splitters (2 included, 3 maximum), up to 7 fans can be connected

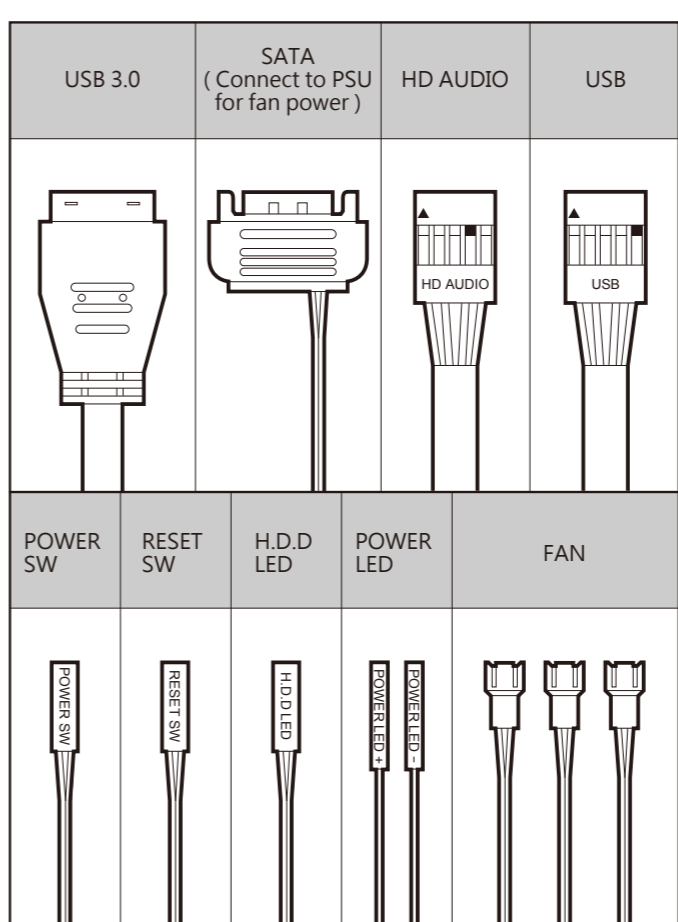


The case's fan control system can be used to optimize the speed of non-PWM fans (connector: 3 pins). The included Vortex RGB PWM fans, as well as any other PWM fan, are controlled automatically by the motherboard and do not need to be manually controlled.



Fan cable max current loading is 1A

Installing the front I/O connectors



ACCESSORY KIT

1		Power Supply Screws	X 4
2		MBD/HDD screws	X 16
3		SSD screws	X 20
4		Stand-off	X 2
5		Short fan screws	X 16
6		Headphone hook screws	X 2
7		Shockproof rubber washers for top fans	X 4
8		Cable Ties	X 4
9		Water cooling orifices	X 3
10		Headphone hook	X 1
11		Fan connection splitter	X 2
12		Cleaning cloth	X 1

COUGAR USA Technical Service
 Tel: (833) 256-3778
 Mail: rma@compucaseusa.com
<https://cougargaming.com/support/contact/upload/>

For more information, please visit www.cougargaming.com
 Compucase Enterprise Co.,Ltd.
 No. 225, Lane 54, An Ho Road Sec. 2 Tainan, Taiwan, R.O.C
 Tel: +886-6-356-0606
 Service E-Mail: service@cougargaming.com

