

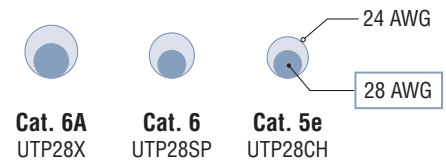
## High Density Cabling Solutions

Family of innovative 28 AWG solutions which increase cable pathway capacities, enable higher density layouts, and improve ease of cable management.

Best for:

- Overcrowded pathways in **existing** telecom rooms and data centers
- Enabling smaller pathways in **new** telecom rooms and data centers
- Where <100 meter maximum channel lengths are OK

## 28 AWG Size Comparison



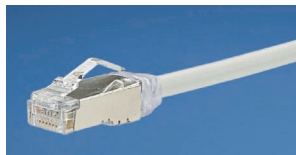
[Approximate cord diameter to scale]

## 28 AWG Patch Cords

- Less than 50% the size of traditional 24 AWG patch cords
- Provide up to 96 meters of channel length (when using 6 meters of patch)
- Support PoE, PoE+, and PoE++
- 100% tested to applicable component limits
- 1.9 de-rating factor for all cords
- Available in many standard colors



UTP28SP#M<sup>^</sup>  
(UTP)



STP28X#M<sup>^</sup>  
(F/UTP)

Part Number	Cord Diameter	Performance	Description
UTP28X#M <sup>^</sup>	4.7mm	Category 6A	Category 6A Performance 28 AWG UTP CM/LSZH Patch Cord
UTP28SP#M <sup>^</sup>	3.8mm	Category 6	Category 6 Performance 28 AWG UTP CM/LSZH Patch Cord
UTP28CH#M <sup>^</sup>	3.8mm	Category 5e	Category 5e Performance 28 AWG UTP CM/LSZH Patch Cord

# = Length in meters. Lengths 0.5 to 10 meters (in 0.5 meter increments), 11 to 20 meters (in 1 meter increments), and 25 to 40 meters (in 5 meter increments).

<sup>^</sup> = Color. No suffix designates Off White color. For other colors, suffix: BL (Black), BU (Blue), GR (Green), GY (Gray), OR (Orange), RD (Red), VL (Violet), or YL (Yellow); PK (Pink) is available as cord color option for UTP28SP only.

STP28X#M <sup>^</sup>	Cord Diameter	Performance	Description
STP28X#M <sup>^</sup>	4.7mm	Category 6A	Category 6A Performance 28 AWG F/UTP CM/LSZH Patch Cord

# = Length in meters. Lengths 0.5 to 10 meters (in 0.5 meter increments), 11 to 20 meters (in 1 meter increments), and 25 to 40 meters (in 5 meter increments).

<sup>^</sup> = Color. Add suffix: BL (Black), BU (Blue), GR (Green), IG (Int'l Gray), OR (Orange), RD (Red), VL (Violet), YL (Yellow).

## 28/30 AWG Modular Jacks

- 100% tested and individually serialized
- Required for terminating to wires of Panduit 28 AWG patch cords
- Terminates 28 AWG solid/stranded and 30 AWG solid conductors



CJT688TGAW

Part Number	Performance	Description
CJT6X88TG**	Category 6A	Mini-Com® TX6A™ 10Gig™ 28/30 AWG UTP Jack Module
CJT688TG**	Category 6	Mini-Com® TX6™ PLUS 28/30 AWG UTP Jack Module
CJT5E88TG**	Category 5e	Mini-Com® TX5e™ 28/30 AWG UTP Jack Module

\*\* = Color. Add suffix: IW (Off White), EI (Electric Ivory), IG (Int'l Gray), AW (Arctic White), BL (Black), BU (Blue), GR (Green), RD (Red), OR (Orange), VL (Violet), YL (Yellow), WH (White), BR (Brown).

## 28 AWG Horizontal Copper Cabling



PUD6C2804WH-CE

- Smaller size improves fill capacity of cable managers
- Flexible cable simplifies cable management and routing
- Delivers 1000BASE-T performance at a channel reach of up to 50 meters; channel compliant to ANSI/TIA-568-C.2 Category 6 and ISO 11801 Class E standards

Part Number	Performance	Description
PUD6C2804**-CE	Category 6	TX6-28™ 4-pair UTP twisted pair horizontal cabling, 28 AWG, CM (UL 1685), LSZH (IEC60332-1 and 60332-3), 305m carton.

\* = Color. Add suffix: BU (Blue); WH (White).

## 28 AWG Modular Plugs

- Required for terminating to wires of Panduit 28 AWG patch cords
- Patented tangle-free latch prevents snags and provides easy release



SP628-C

Part Number	Performance	Description
SP628-C	Category 6A & 6	TX6™ PLUS 28 AWG UTP Modular Plug, 100 Pack
MP528-C	Category 5e	PanPlug™ 28 AWG UTP Modular Plug, 100 Pack

Plug housings and boots are clear.

## High Density Cabling Solutions

### 28 AWG Switch Harnesses



QPPSDWBL\*\*M



QPCSDWBL\*\*M



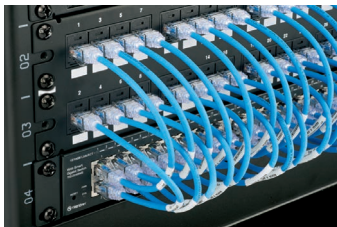
QPCSDWWXL\*\*M

- Readily available harnesses using Panduit 28 AWG components for common switch-to-panel cabling approaches
- Reduces network rack cabling installation time by 75% or more compared to loose cord cabling
- Multiple cable bundle counts, lengths, and configurations available
- Enables quick and easy routing within tight spaces
- Ensures cleanly dressed IDF/MDF cabling

Part Number	Performance	Description
QPPSDWAL**M	Category 6	6-Cable Switch Patching Harness, Cat 6 28 AWG White UTP CM/LSZH Cable, Black Plug Pack to Modular Plugs
QPPSDWBL**M	Category 6	12-Cable Switch Patching Harness, Cat 6 28 AWG White UTP CM/LSZH Cable, Black Plug Pack to Modular Plugs
QPCSDWAL**M	Category 6	6-Cable Switch Port Harness, Cat 6 28 AWG White UTP CM/LSZH Cable, Black Plug Pack to Pre-terminated Cassette with Black Jacks
QPCSDWBL**M	Category 6	12-Cable Switch Port Harness, Cat 6 28 AWG White UTP CM/LSZH Cable, Black Plug Pack to Pre-terminated Cassette with Black Jacks
QPCSDW6XL**M	Category 6	6-Cable Switch Port Harness, Cat 6 28 AWG White UTP CM/LSZH Cable, Loose Plugs to Pre-terminated Cassette with Black Jacks
QPCSDWWXL**M	Category 6	12-Cable Switch Port Harness, Cat 6 28 AWG White UTP CM/LSZH Cable, Loose Plugs to Pre-terminated Cassette with Black Jacks

\*\* = Length in meters, 1-5m (every 1m).

### 28 AWG Switch Patching Cords & Kits



UTP28SP8INBU-48

- Convenient cords and kits for direct 1:1 port patching of switch to panel
- Uses 8-inch Category 6 28 AWG patch cords to directly connect from switch port to adjacent patch panel
- Kits include 48 patch cords, vertically numbered patch panel, and strain relief bar
- Eliminates need for horizontal manager, reducing cost & providing more RU space

#### Patch Cords only

Part Number	Performance	Description
UTP28SP8IN^	Category 6	8-inch Category 6 Performance 28 AWG UTP CM/LSZH Patch Cord
UTP28X8IN^	Category 6A	8-inch Category 6A Performance 28 AWG UTP CM/LSZH Patch Cord
UTP28X0.2M^	Category 6A	0.2m Category 6A Performance 28 AWG UTP CM/LSZH Patch Cord

^ For standard colors other than Off White, add suffix BL (Black), BU (Blue), GR (Green), GY (Gray), OR (Orange), RD (Red), VL (Violet), or YL (Yellow); PK (Pink) is available as cord color option for UTP28SP only.

Add -48 to order a bulk pack of 48 patch cords.

#### Switch Patching Kits

CPP48KFVPCWH	Category 6	48-Port Switch Patching Kit with Off-White Patch Cords, Vertically Numbered Patch Panel, and Strain Relief Bar
CPP48KFVPCBU	Category 6	48-Port Switch Patching Kit with Blue Patch Cords, Vertically Numbered Patch Panel, and Strain Relief Bar

#### WORLDWIDE SUBSIDIARIES AND SALES OFFICES

PANDUIT CANADA  
Markham, Ontario  
cs-cdn@panduit.com  
Phone: 800.777.3300

PANDUIT EUROPE LTD.  
London, UK  
cs-emea@panduit.com  
Phone: 44.20.8601.7200

PANDUIT SINGAPORE PTE. LTD.  
Republic of Singapore  
cs-ap@panduit.com  
Phone: 65.6305.7575

PANDUIT JAPAN  
Tokyo, Japan  
cs-japan@panduit.com  
Phone: 81.3.6863.6000

PANDUIT LATIN AMERICA  
Guadalajara, Mexico  
cs-la@panduit.com  
Phone: 52.33.3777.6000

PANDUIT AUSTRALIA PTY. LTD.  
Victoria, Australia  
cs-aus@panduit.com  
Phone: 61.3.9794.9020

For a copy of Panduit product warranties, log on to [www.panduit.com/warranty](http://www.panduit.com/warranty)

©2015 Panduit Corp.  
ALL RIGHTS RESERVED.

COSG10--WW-UKE

11/2015

For more information

Visit us at [www.panduit.com](http://www.panduit.com)

Contact Customer Service by email: [cs@panduit.com](mailto:cs@panduit.com)  
or by phone: 800-777-3300