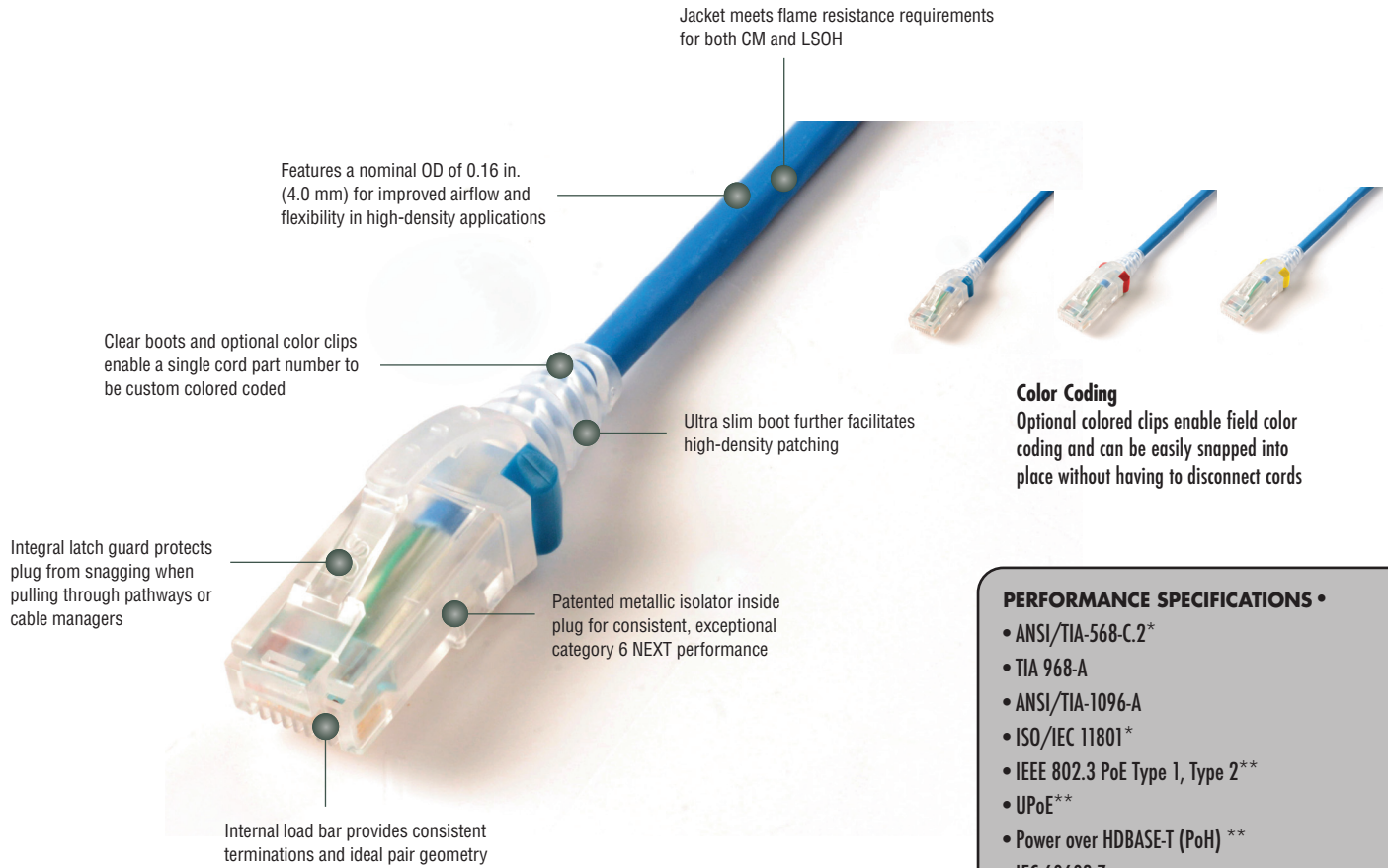


# SkinnyPatch™ 6 UTP Modular Cords – US

Siemon's SkinnyPatch 6 Modular Cords deliver category 6 performance with a reduced cable diameter for improved airflow and increased flexibility in high-density patching areas. The cord's smaller 28 AWG stranded copper construction offers a significantly tighter bend radius for easier cable routing and enhanced cable management, providing pathway space savings in racks and cabinets while facilitating moves, adds and changes in tight spaces. Confirmed by Intertek, an independent third party test lab, SkinnyPatch 6 Modular Cords exceed ANSI/TIA-568-C.2 and ISO/IEC 11801 Edition 2.2 performance standards. These cords also feature Siemon's patented metallic isolator for exceptional NEXT performance and innovative 360-degree crimp for excellent plug-to-cable strain relief.



### Color Coding

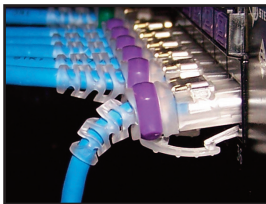
Optional colored clips enable field color coding and can be easily snapped into place without having to disconnect cords

### PERFORMANCE SPECIFICATIONS •

- ANSI/TIA-568-C.2\*
- TIA 968-A
- ANSI/TIA-1096-A
- ISO/IEC 11801\*
- IEEE 802.3 PoE Type 1, Type 2\*\*
- UPoE\*\*
- Power over HDBASE-T (PoH) \*\*
- IEC 60603-7
- cUL US Listed
- IEC 60332-1, 60754, 61034

\*Patch cord length is limited to 8 meters for a maximum channel length of 98 meters.

\*\* See table for recommended maximum bundle size



**Excellent Bend Relief**  
Boot and integrated strain relief ensures minimum bend radius for category 6 performance



**Diameter**  
Smaller diameter cable significantly reduces bundle and pathway fill for space savings.



**Improved Airflow**  
Offers improved airflow, accessibility and cable management in high-density applications.

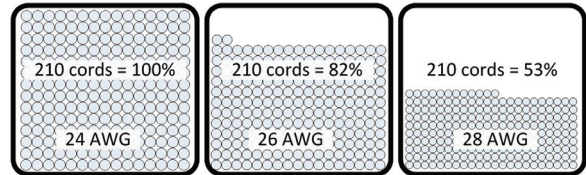
# PRODUCT INFORMATION

## PERFORMANCE SPECIFICATIONS\*

ELECTRICAL	
Contact Resistance	20 mΩ
Input to Output DC Resistance	200 mΩ
Min. Dielectric Withstand Voltage (contact to contact)	1000 V DC or AC peak
Insulation Resistance	500 mΩ
Compatibility	Category 6 and 5e
Current Rating @ 25°C (77°F)	1.5 A
Remote Powering	PoE Type 1, Type 2, UPoE, PoH
Attenuation De-rating Factor	1.9
MECHANICAL — GENERAL	
Operating Temperature	-10 to 60 °C, (14 to 140 °F)
Flammability Rating	UL 94 - V0
Green Features	RoHS, lead-free, halogen-free, PVC free
Contact Materials	Copper alloy with contact plating of 50 microinches gold or equivalent
Plastic Materials	Flame retardant thermoplastic
Marking	P/N, length, performance level

MECHANICAL — PLUG	
Number of Plug Insertion Cycles	750
Min. Plug Retention Force	50N (11.24 lbf)
Plug Compatibility	Compatible with RJ45 outlets
MECHANICAL — CABLE	
Wire Size (Nominal)	28 AWG 7x36 Stranded bare copper
Construction	UTP
Cable O.D. (Nominal)	4.0mm (0.16 in.)
Wiring	T568A/B as specified by part #
Jacket Type	CM/LSOH
Bend Radius	16mm (0.64 in.)

MAXIMUM RECOMMENDED BUNDLE SIZE		
Application	Current per Pair (mA)	28 AWG Patch Cords
PoE Type 1	350	48
PoE Plus Type 2	600	48
UPoE	600	24
PoH	1000	24



Fill Comparison: Category 6 Cords in a 101mm ( 4 in.) cable manager

## Ordering Information:

MC6-(XX)-(YY)-28 . . . . . SkinnyPatch Category 6 double-ended, 4-pair, 28 AWG UTP stranded modular patch cord, T568A/B, clear boot.

Length	Jacket Color
03 = 0.9m (3 ft.)	01 = Black 04 = Gray 07 = Green
05 = 1.5m (5 ft.)	02 = White 05 = Yellow 08 = Violet
07 = 2.1m (7 ft.)	03 = Red 06 = Blue 09 = Orange
10 = 3.1m (10 ft.)	
15 = 4.6m (15 ft.)	
20 = 6.1m (20 ft.)	

Ⓢ Add "B" to end of part number for bulk project pack of 100 cords.

CLIP-(XX) . . . . . Color coding clip, bag of 25

Clip Color
01 = Black 04 = Gray 07 = Green
02 = White 05 = Yellow 08 = Violet
03 = Red 06 = Blue 09 = Orange



Because we continuously improve our products, Siemon reserves the right to change specifications and availability without prior notice.



**Construction**  
Smaller 28 AWG construction results in a smaller bend radius for easier routing in tight spaces.

**NORTH AMERICA**  
Watertown, CT USA  
Phone (1) 860 945 4200 US  
Phone (1) 888 425 6165 Canada

**EUROPE/MIDDLE EAST/AFRICA**  
Surrey, England  
Phone (44) 0 1932 571771

**ASIA/PACIFIC**  
Shanghai, P.R. China  
Phone (86) 21 5385 0303

**LATIN AMERICA**  
Bogota, Colombia  
Phone (571) 657 1950/51/52

