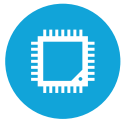




**HIGHLIGHTS**



Projected Capacitive Touch Screen



Intel® Celeron® Quad Core J1900 2.42Ghz



Up to 8GB RAM



IP64 Water and Dust Proof Front Panel Protection



Multiple Peripheral Options

# SPECIFICATIONS

## PROCESSING

CPU: Intel® Celeron® Quad Core J1900 2.42Ghz  
System Memory: 1x DDR3L SoDIMM up to 8GB

## LCD PANEL

LCD Size: 15"  
Maximum Resolution: 1024 x 768  
Brightness: 300 nits  
LCD BacklightType: LED  
LCD Aspect Ratio: 4:3

## STORAGE

Solid State Drive: Standard 128 GB SSD

## POWER

Power Supply: 60W +19V lockable 3 Pin power adapter  
EMC & Safety: FCC / CE Class A, LVD  
Operating Temperature: 32°F to 95°F (0° to 40°C)

## DIMENSIONS

15" with base; 13.3" H x 14.3" W x 9" D (with MSR)

## I/O PORTS

USB: 3x 2.0, 1x 3.0, 1x 2.0 on side of unit  
COM: 2x RS-232 (power option by jumper)  
Gigabit LAN (10/100/1000): x1  
Cash Drawer Port: x1 RJ11 (+ 24V)  
Power Button: x1  
VGA: 1x D-SUB15  
Audio: 3.5mm Jack audio out (Does not include speakers)

## OPTIONAL PERIPHERALS

MSR USB: Encrypted Option Available Customer  
Display: 2 x 20 VFD, 8" & 15"  
Scanner: 2D Barcode Scanner  
Fingerprint Reader  
Pin Pad Mount  
VESA/Wallmountable  
Printer Base: Compatible with Universal Printer Base (T25 and EpsonT70II printers) and the Slim Printer Base (Epson TM-M30 printer)

## OS SUPPORT

POSREADY 7 (64 bit), Windows 10 IOT & Pro (64 bit), Linux



## KEY FEATURES

1	15 LED LCD Projected Capacitive Display
2	Sleek Design
3	Multiple Base Options
4	Multiple Ports including USB, VGA and Powered COM