

In the box

**A + B** IE 100 PRO Wireless (Model: SEBT1)

Soft pouch

IE 100 PRO

IE PRO BT Connector (Model: SEBT1)

Safety Guide

Quick Guide

Compliance Sheet

Black cable for IE 100 PRO

Silicone adapters

Foam adapters (M)

Cleaning tool

USB-A

USB-C

**A** IE 100 PRO

Soft pouch

IE 100 PRO

Foam adapters (M)

Silicone adapters

Cleaning tool

Safety Guide

Quick Guide

Compliance Sheet

**B** IE PRO Bluetooth Connector (Model: SEBT1)

IE PRO BT Connector

USB-A

USB-C

Safety Guide

Quick Guide

Compliance Sheet



IE 100 PRO Wireless  
Model: SEBT 1

- |                             |                    |
|-----------------------------|--------------------|
| Quick Guide                 | Kort vejledning    |
| Kurzanleitung               | Pikaohje           |
| Guide de démarrage rapide   | Σύντομη οδηγία     |
| Guía rápida                 | Kısa Kılavuz       |
| Instrucciones resumidas     | Краткая инструкция |
| Instruções resumidas        | 快速指南               |
| Beknopte gebruiksaanwijzing | 快速使用指南             |
| Krótko instrukcja obsługi   | クイックガイド            |
| Snabbguide                  | 요약 안내서             |

Sennheiser electronic GmbH & Co. KG  
Am Labor 1, 30900 Wedemark, Germany  
www.sennheiser.com

Publ. 07/20, 587443/A01

SENNHEISER

**Charging with BT Connector**

100%  
1,5 HRS

USB-C

USB-A

**Switching the headphones on/off**

Hold 3s

ON

OFF

3x "Power on"

3x "Connected"

3x "Power off"

1x "Lost connection"

**Replacing the ear adapters**

Silicone adapters

1x CLICK!

2x CLICK!

**Wearing the earphones**

**Bluetooth pairing**

1 OFF

Bluetooth OFF

2 ON

Bluetooth ON

Hold 5s

3 "Pairing"

"Pairing successful"

3x "Device (1) connected"

4 IE PRO BT Module

**Changing the cable**

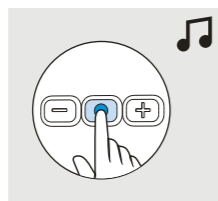
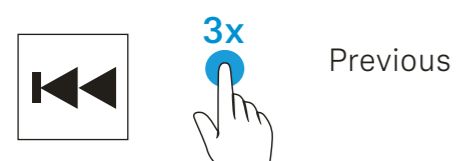
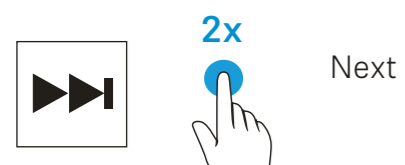
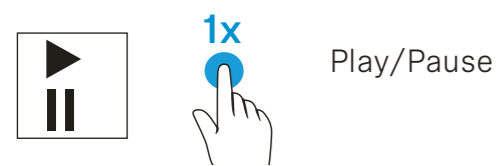
Left

Right

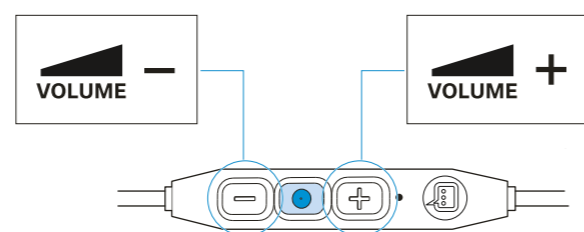
IE PRO BT Connector

Optimum cable routing

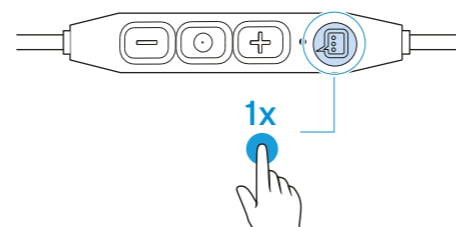
Music functions



Adjusting the volume

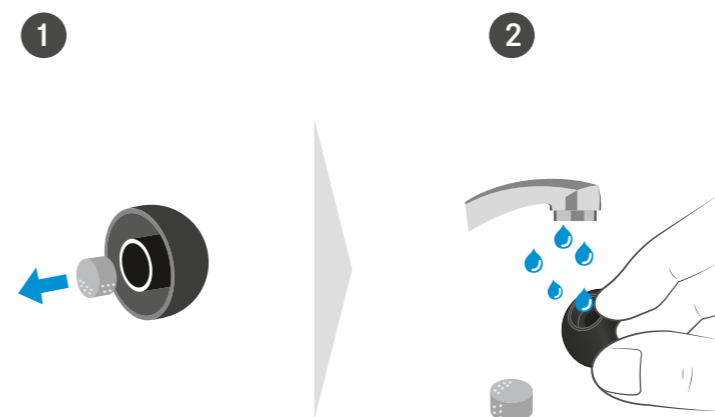


Voice assistant



Activating/deactivating the voice assistant

Cleaning



Apple®, iPad® and iPhone® are trademarks of Apple Inc., registered in the U.S. and other countries. Google Play and the Google Play logo are trademarks of Google LLC.

Smart Control

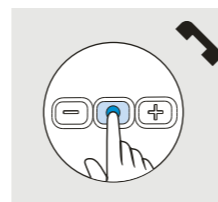
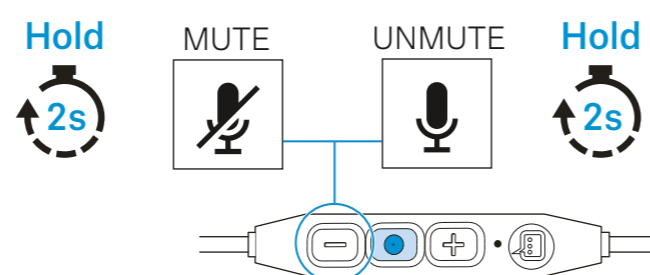
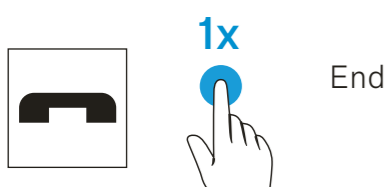
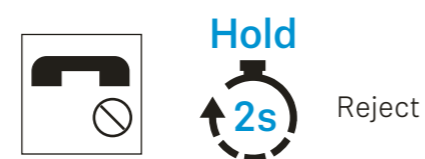
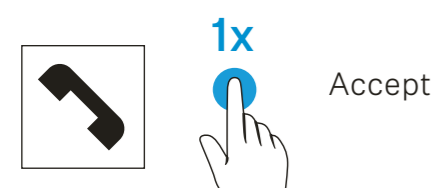
Download the free Sennheiser Smart Control app.



Information and Accessories

www.sennheiser.com

Call functions



Specifications

Model: IE 100 PRO

Frequency response	20 Hz - 18,000 Hz
Impedance	20 Ω
Sound pressure level (SPL)	115 dB (1 kHz / 1 V <sub>rms</sub> )
Total harmonic distortion (THD)	< 0.1 % (1 kHz, 94 B)
Noise attenuation	< 26 dB
Magnetized field strength	1.63 mT
Temperature range	Operation: -5 °C ... +50 °C Storage: -20 °C ... +70 °C
Relative air humidity	< 95 %

Model: SEBT1

<b>Bluetooth®</b>	
Version	Bluetooth 5.0 compatible, class 1, BLE
Transmission frequency	2,402 Mhz to 2,480 MHz
Modulation	GFSK, π/4 DQPSK, 8DPSK
Profiles	HSP, HFP, AVRCP, A2DP
Output power	10 mW (max)
Codec	SBC, aptX®, aptX® LL, AAC

The Bluetooth® word mark and logos are registered trademarks owned by Bluetooth SIG, Inc. and any use of such marks by Sennheiser electronic GmbH & Co. KG is under license.

Model: SEBT1

Wearing style	Bluetooth® neckband cable
Microphone principle	MEMS
Microphone frequency response	100 Hz - 8,000 Hz
Microphone sensitivity	(as per ITU-T P.79) -42 dBV/Pa
Microphone pick-up pattern (speech audio)	omni-directional
Power supply built-in rechargeable lithium-polymer battery	3.7 V ≈, 100 mAh
USB charging	5 V ≈, 100 mA max.
Operating time	10 hrs (music playback via SBC) with rechargeable battery; 240 hrs in standby mode
Charging time of rechargeable batteries	approx. 2.5 hrs
Temperature range	Operation: +5 °C ... +40 °C ± 5 °C Charging: +10 °C ... +40 °C ± 5 °C Storage: -20 °C ... +70 °C
Temperature range	Operation: 10 ... 80 %, non-condensing Storage: 10 ... 90 %
Magnetic field strength	1.63 mT (with IE 100 PRO) 0.23 mT (without headphone)
Weight	approx. 13 g