

ENGLISH

Diagram References

1 Installation and Wiring

- 1-3. Install the device.
4. Fix the SIM card module (sold separately) and connect the antenna.
5. Fix the telephone module (sold separately).
6. Wire Wi-Fi antenna.

Note: Power down the control panel before wiring accessories and peripherals.

- 1 Network Wiring
- 2 Peripherals/Power Supply Wiring
 1. Alarm Input Wiring
 - a. NC Detector
 - b. NO Detector
 - c. Unoccupied Zone
 - d. Tamper-proof
 - e. Dual-Zone Series Connection
 - f. Dual-Zone Parallel Connection
 2. Alarm Output Wiring
 3. RS-485 Wiring: Wireless Receiver , keypad, etc.,
 4. Power Supply Wiring
- 3 Telephone Module Wiring
7. Close and lock the case of the control panel.

2 Set Up

Indicator
Green: Normal, Red: Fault, Off: No module or not be used

- a PSTN b Mobile Network c Reset d Power Supply

Note: After the user connects the power cord according to the figure, fix it with a cable tie to avoid the cable falling off due to external force, causing a short circuit and other dangers.

Set up via Web Client

For more activation methods, refer to the User Manual.

Default IP Address:

Mobile browser(AP mode):192.168.8.1

Network cable connection: 192.0.0.64

1. Enter the device IP address in the web browser.
2. Create a password for admin account to activate the device.

Reset:

After the device is started, hold the reset button for 10 seconds to reset the device.

The reset indicator will flash 3 times.

Specification

Model	DS-PHA64-P2	DS-PHA64-W4P2	
Device connection	Detector	UP to 64 (8 on-board, 56 wired/wireless)	
	Relay output	Up to 64 (4 on-board, 60 wired/wireless)	
	RS-485 wireless receiver	Up to 7	
	Sounder	1 wired sounders (on-board connection) 2 wireless sounders	
Alarm input	Area	8	
	Keyfob	8	
Function	Notification	SMS&Phone call (with 3G/4G/GPRS)	
	Network camera	N/A	
Protocol	Protocol	ISAPI, DC09, ISUP, CSV-IP, EZVIZ	
	Wired network	10M/100M Ethernet	
Network	Cellular network	Support(with 3G/4G/GPRS module)	
	Wi-Fi/AP	Standard	N/A
User	User	Installer: 1; Administrator: 1; Maintenance: 1 Operator: 45	
	Tag/Card		12
Others	Operation temperature	-10 °C to 55 °C (-4 °F to 122 °F)	
	Operation humidity	10% to 90% (No condensing)	
	Dimension (W x H x D)	310 mm (12.2") x 225 mm (8.6") x 95 mm (3.7")	
	Weight	1.15 kg	1.17 kg

Note: The 868 Mhz wireless sounder can be enrolled to the hybrid control panel via the wireless receiver that is at the address of 9.

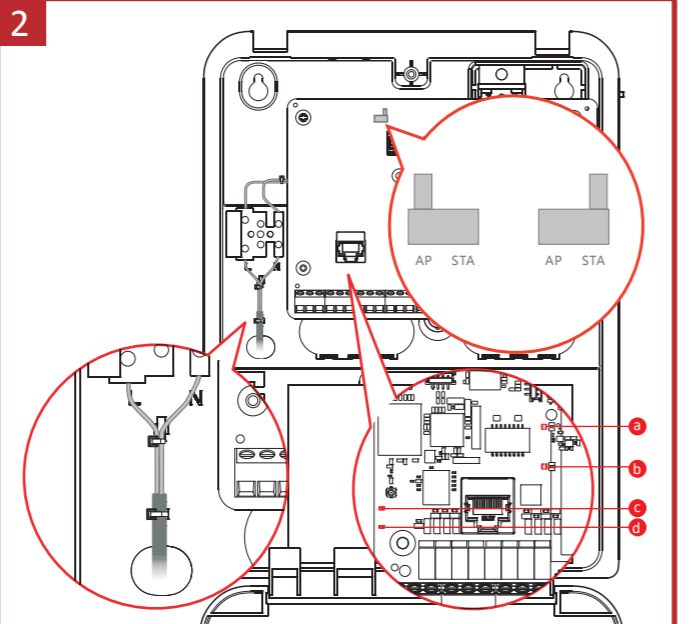
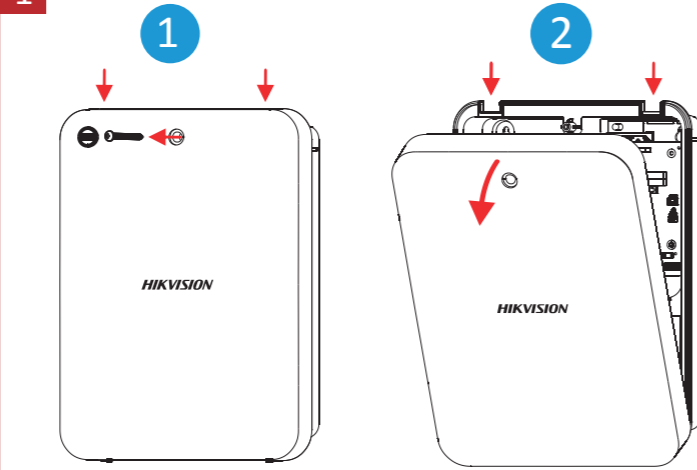
- Fuse Cutout: rated voltage 250 V, rated current 6 A.
- Mains supply cables need to meet IEC 60332 or UL certification.
- AUX+ output interface: DC12 V, 1000 mA.
- BELL+ output interface: DC12 V, 500 mA.
- Allowed batteries specifications: rated voltage 12 V, capacity 7Ah, Min. charging current ≥ 1 A, flame class of shell V-0.

CAUTION

1. The additional force shall be equal to three times the weight of the equipment but not less than 50N. The equipment and its associated mounting means shall remain secure during the installation. After the installation, the equipment, including any associated mounting plate, shall not be damaged.
2. To prevent injury, this equipment must be securely attached to the floor/wall in accordance with the installation instructions.

CAUTION

- 1. The equipment is not suitable for use in locations where children are likely to be present.
- 2. CAUTION: Risk of explosion if the battery is replaced by an incorrect type.
- 3. Improper replacement of the battery with an incorrect type may define a safeguard (for example, in the case of some lithium battery types).
- 4. Do not dispose of the battery into fire or a hot oven, or mechanically crush or cut the battery, which may result in an explosion.
- 5. Do not dispose of the battery into water, or immerse the battery in water, which may result in an explosion.
- 6. Do not touch the battery to extremely low or high pressure, which may result in an explosion or the leakage of flammable liquid or gas.
- 7. Do not subject the battery to extremely low or high pressure, which may result in an explosion or the leakage of flammable liquid or gas.
- 8. Dispose of used batteries according to the instructions.



User Manual Legal and Regulatory Information



©2021 Hangzhou Hikvision Digital Technology Co., Ltd. All rights reserved.
 The manual is subject to change without notice. Please refer to the latest version of this manual at the Hikvision website.
 Please refer to the manual with the guidance and assistance of professionals trained in supporting the product.
 HIKVISION and other Hikvision trademarks and logos are the property of Hangzhou Hikvision Digital Technology Co., Ltd. All other trademarks and logos mentioned are the property of their respective owners.
 TO THE MAXIMUM EXTENT PERMITTED BY APPLICABLE LAW, THIS MANUAL AND THE PRODUCT DESCRIBED, WITH ITS HARDWARE, SOFTWARE AND FIRMWARE, ARE PROVIDED "AS IS" AND "WITH ALL FAULTS AND ERRORS". HIKVISION MAKES NO WARRANTIES, EXPRESS OR IMPLIED, INCLUDING WITHOUT LIMITATION, MERCHANTABILITY, SATISFACTORY QUALITY, OR FITNESS FOR A PARTICULAR PURPOSE. THE USE OF THE PRODUCT BY YOU IS AT YOUR OWN RISK. IN NO EVENT WILL HIKVISION BE LIABLE TO YOU FOR ANY SPECIAL, CONSEQUENTIAL, INCIDENTAL, OR INDIRECT DAMAGES, INCLUDING AMONG OTHERS, DAMAGES FOR LOSS OF BUSINESS PROFITS, BUSINESS INTERRUPTION, OR LOSS OF DATA, CORRUPTION OF SYSTEMS, OR LOSS OF DOCUMENTATION, WHETHER BASED ON BREACH OF CONTRACT, TORT (INCLUDING NEGLIGENCE), PRODUCT LIABILITY, OR OTHERWISE, IN CONNECTION WITH THE USE OF THE PRODUCT. EVEN IF HIKVISION HAS BEEN ADVISED OF THE POSSIBILITY OF SUCH DAMAGES OR LOSS, YOU ACKNOWLEDGE THAT THE NATURE OF THE INTERNET PROVIDES FOR INHERENT SECURITY RISKS, AND HIKVISION SHALL NOT TAKE ANY RESPONSIBILITIES FOR NEGLIGENCE, PRIVACY LEAKAGE OR OTHER DAMAGES RESULTING FROM CYBER ATTACK, VIRUS, INFECTION, OR OTHER INTERNET SECURITY RISKS; HOWEVER, HIKVISION WILL PROVIDE TRUTHFUL TECHNICAL SUPPORT IF REQUESTED. YOU AGREE TO USE THIS PRODUCT IN COMPLIANCE WITH ALL APPLICABLE LAWS, AND YOU ARE SOLELY RESPONSIBLE FOR ENSURING THAT YOUR USE CONFORMS TO THE APPLICABLE LAW. SPECIALLY, YOU ARE RESPONSIBLE FOR ENSURING THE PRODUCTION AND OPERATION OF CHEMICAL OR BIOLOGICAL WEAPONS, ANY ACTIVITIES IN THE CONTEXT RELATED TO ANY NUCLEAR EXPLOSIVE OR UNSAFE NUCLEAR FUEL-CYCLE, OR IN SUPPORT OF HUMAN RIGHTS VIOLATIONS. IN THE EVENT OF ANY CONFLICTS BETWEEN THIS MANUAL AND THE APPLICABLE LAW, THE LATER PREVAILS.
 2012/19/EU (WEEE directive): Products marked with this symbol cannot be disposed of as unsorted municipal waste in the European Union. For proper recycling, return this product to your local supplier upon the purchase of equivalent new equipment, or dispose of it at designated collection points. For more information see: www.recycle4it.eu
 2006/66/EC (Battery directive): This product contains a battery that cannot be disposed of as unsorted municipal waste in the European Union. See the product documentation for specific battery information. The battery is marked with this symbol, which may include lettering to indicate cadmium (Cd), lead (Pb), or mercury (Hg). For proper recycling, return the battery to your supplier or to a designated collection point. For more information see: www.recycle4it.eu
 CE This product and, if applicable, the supplied accessories too are marked with "CE" and comply therefore with the applicable harmonized European standards listed under the CE Directive 2014/53/EU, the EMC Directive 2014/53/EU, the LVD Directive 2014/35/EU, the RoHS Directive 2011/65/EU

FCC Information
 Please take attention that changes or modification not expressly approved by the party responsible for compliance could void the user's authority to operate the equipment.
 FCC compliance: This equipment has been tested and found to comply with the limits for a Class B digital device, pursuant to part 15 of the FCC Rules. These limits are designed to provide reasonable protection against harmful interference in a residential installation. This equipment generates, uses and can radiate radio frequency energy and, if not installed and used in accordance with the instructions, may cause harmful interference to radio communications. However, there is no guarantee that interference will not occur in a particular installation. If this equipment does cause harmful interference to radio or television reception, which can be determined by turning the equipment off and on, the user is encouraged to try to correct the interference by one or more of the following measures:
 -Reorient or relocate the receiving antenna.
 -Increase the separation between the equipment and receiver.
 -Consult the dealer or an experienced radio/TV technician for help.
 This equipment should be installed and operated with a minimum distance 20cm between the radiator and your body.
 FCC Conditions:
 1. This device complies with part 15 of the FCC Rules. Operation is subject to the following two conditions:
 1. This device may not cause harmful interference.
 2. This device must accept any interference received, including interference that may cause undesired operation.
INSTALLATION CAUTION
 1. The additional force shall be equal to three times the weight of the equipment but not less than 50N. The equipment and its associated mounting means shall remain secure during the installation. After the installation, the equipment, including any associated mounting plate, shall not be damaged.
 2. To prevent injury, this equipment must be securely attached to the floor/wall in accordance with the installation instructions.

