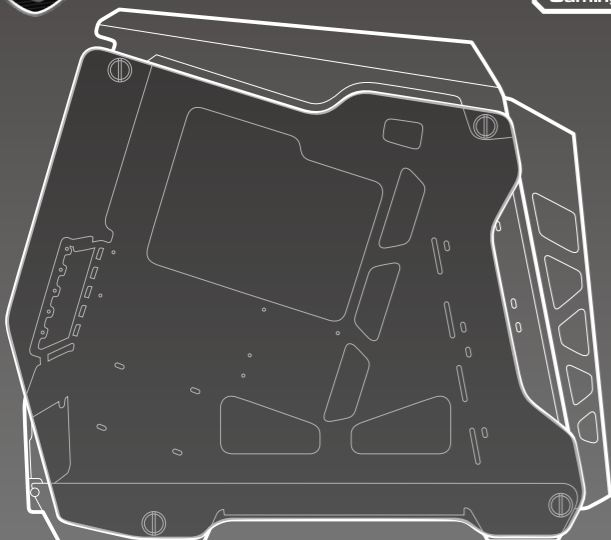




REAL GEAR FOR REAL GAMERS

COUGAR Gaming case



CONQUER ESSENCE

OPEN-DESIGN MICRO ATX CASE WITH ALUMINIUM FRAME AND TEMPERED GLASS COVERS



COMPACT SPLENDOR

Conquer Essence supports Micro-ATX and Mini ITX; if you want to build a compact and powerful gaming PC that sports a top-of-the-line design, this is the case you want.

FULL METAL BODY

Conquer Essence's CNC-milled aluminum body is not only a guarantee of durability; it is also a powerful design statement that remarks its military inspiration and displays the COUGAR DNA

TEMPERED GLASS COVERS

Two tempered glass covers provide the perfect finish to Conquer's metal body. The high-quality feel of the glass joins its transparency to give you an unobstructed view of your case at all times.

POWERFUL COOLING

Support for four 120mm fans and two 240mm radiators (front and top) join the case's open design to guarantee perfect cooling.

Model Name	CONQUER ESSENCE
Case Material	Aluminum Alloy + Tempered Glass
Case Type	Mini Tower
Motherboard Type	Mini ITX/MicroATX
Dimensions (WxHxD)	233 x 480 x 522 mm (9.17 x 18.89 x 20.55 in)
3.5" Drive Bay	2
2.5" Drive Bay	3+2 (converted from 3.5" drive bays)
External Connections	USB 3.0 x 2 / Mic x 1 / Audio x 1
Cooling Fan Support	Top : 120mm x 2 / Front : 120mm x 2
Water Cooling Radiator Support	Top : 240mm / Front : 240mm
Expansion Slots	5
Maximum GPU Length	350mm
Maximum CPU Cooler Height	160mm
Maximum PSU Length	200mm
Tempered Glass Side Panel	Both Sides 5mm Thick
Cable Management	Yes

Specifications may vary based on different regions

Compucase Enterprise Co.,Ltd.
No. 225, Lane 54, An Ho Road Sec. 2 Tainan,
Taiwan, R.O.C
Tel:+886-6-356-0606

COUGAR USA Technical Service
Tel: (833) 256-3778
Mail: rma@compucaseusa.com

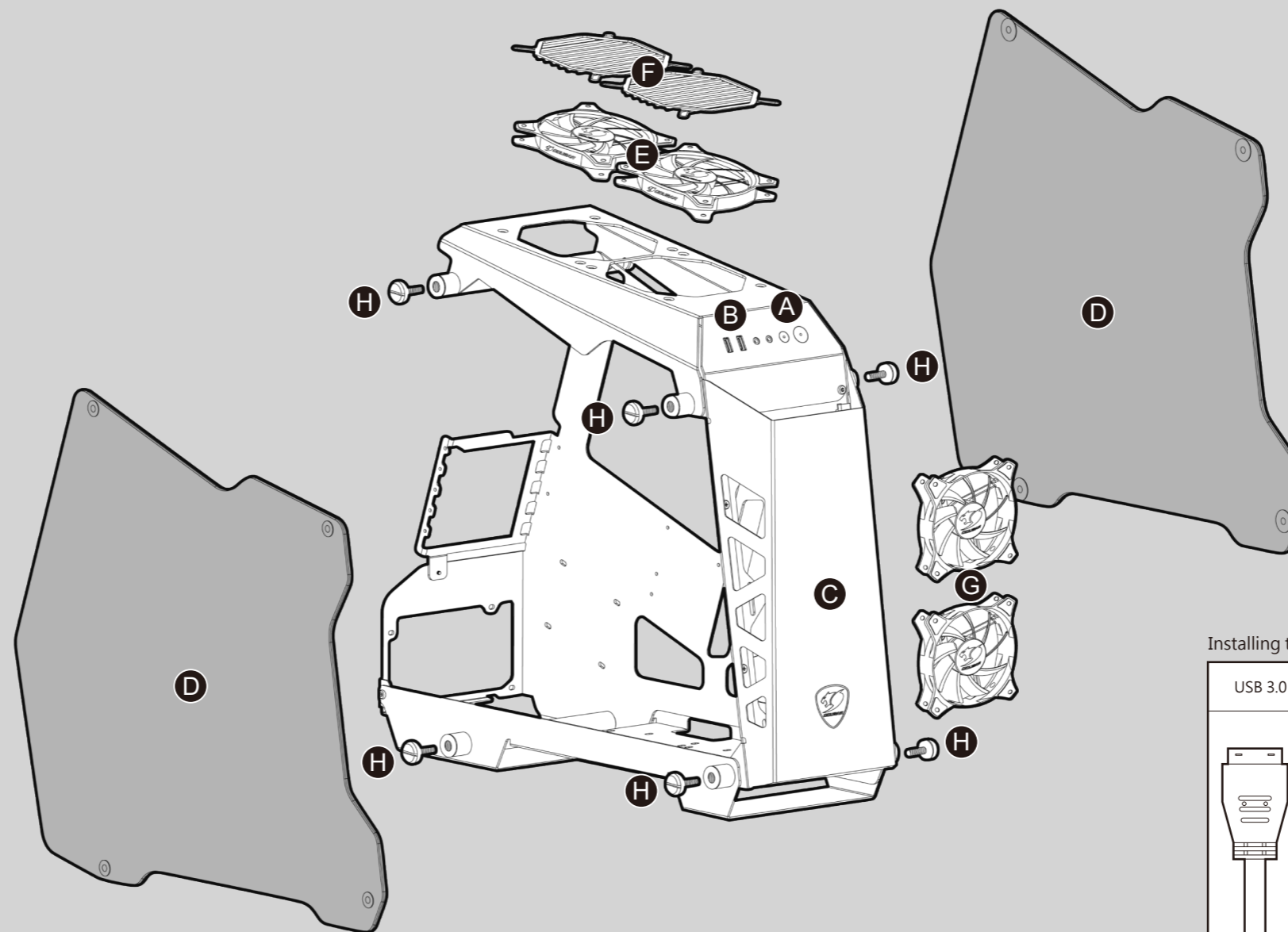
Service email : <https://cougargaming.com/support/contact/upload/>

More information you will find at cougargaming.com
Compucase Enterprise Co.,Ltd.
All rights reserved.

Made in China



Assembly Drawing



- A** Power button / Reset button
- B** USB 3.0 / HD audio ports
- C** Removable front panel
- D** Tempered glass panels
- E** 2 x 120mm fans for top panel (Optional)
- F** Fan covers
- G** 2 x 120mm fans for front panel (Optional)
- H** Thumb screws

Installing the Front I/O Connectors

USB 3.0	HD AUDIO	POWER SW	RESET SW	H.D.D LED	POWER LED

ENGLISH

- CNC-Milled Aluminum Body: Durability and Style
- Tempered Glass Covers (Left/Right): Full View
- Powerful Cooling: Up to Four Fans and Two 240mm Radiators
- Compact Versatility: Compatible with both Micro-ATX and Mini-ITX Motherboards

DEUTSCH

- CNC-gefrästes Aluminiumgehäuse: Beständigkeit und Stil
- Hartglasabdeckungen (links/rechts): Gesamtansicht
- Leistungsstarke Kühlung: Bis zu vier Lüfter und zwei 240-mm-Kühlkörper
- Kompakte Vielseitigkeit: Kompatibel mit Micro-ATX- und Mini-ITX-Motherboards

ESPAÑOL

- Cuerpo de Aluminio CNC: Duradero y Elegante
- Cubiertas de Vidrio Templado (Izquierda/Derecha): Visión Total
- Potente Refrigeración: Hasta Cuatro Ventiladores y Dos Radiadores de 240mm
- Versatilidad Compacta: Compatible tanto con Micro-ATX como con Mini-ITX

PORTUGUÊS

- Corpo de Alumínio Branqueado CNC: Durabilidade e Estilo
- Tampas de Vidro Temperado (Esquerdo/Direito): Visão Total
- Refrigeração Poderosa: Até Quatro Ventoinhas e Dois Radiadores de 240mm
- Versatilidade Compacta: Compatível com placas-mãe Mini-ITX e Micro-ATX

РУССКИЙ

- Рама из алюминия аккуратно вырезана станком с ЧПУ: долговечность и стиль
- Корпус закрывается с обеих сторон закаленным стеклом: полный обзор
- Мощное охлаждение: до четырех вентиляторов и двух 240-миллиметровых радиаторов
- Компактная универсальность: совместимость с материнскими платами Micro-ATX и Mini-ITX

FRANÇAIS

- Corps en aluminium fraisé CNC : Durabilité et style
- Couvercles en verre trempé (Gauche/Droit) : Vue intégrale
- Refroidissement puissant : Jusqu'à quatre ventilateurs et deux radiateurs 240 mm
- Polyvalence compacte : Compatible avec les cartes mères Micro-ATX et Mini-ITX

POLISH

- Obudowa z obrabianego cyfrowo aluminium: trwałość i styl
- Osłony z hartowanego szkła (lewa/prawa): pełny widok
- Skuteczne chłodzenie: do czterech wentylatorów i dwa radiatory 240 mm
- Kompaktość i uniwersalność: zgodność z płytami głównymi typu Micro-ATX i Mini-ITX

HUNGARIAN

- CNC alumínium váz: Tartósság és stílusos külső
- Edzett üvegből készült burkolatok (bal és jobb): Teljes nézet
- Hatékony hűtés: Max. négy ventilátor és két 240 mm-es fűtőelem
- Sokszínűség kompakt kivitelben: A Micro-ATX és a Mini-ITX alaplappokkal egyaránt kompatibilis

ITALIANO

- Corpo in alluminio fresato a CNC: Longevità e Stile
- Rivestimenti in vetro temperato(destro/sinistro): Visione completa
- Potente raffreddamento: Fino a quattro ventole e due radiatori da 240 mm
- Versatilità compatta: Compatibile con schede madri Micro-ATX e Mini-ITX

日本語

- アルミ合金フレームを含めてCNC加工で各パーツを作り上げました
- 頑丈でデザイン性抜群です
- 強化ガラスのサイドカバー (左/右側) : 透明でPCの内部構造が見えます
- 4個のファンと2個の240mm水冷ラジエーターを装着できて、優れた放熱効果を確保します
- Micro-ATXとMini-ITXマザーボードに対応、小型で優れた拡張性を備えています

한국어

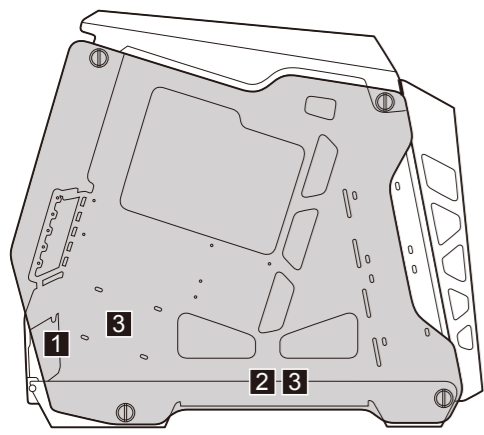
- CNC 가공 알루미늄 바디 : 내구성과 스타일
- 강화 유리 커버 (왼쪽 / 오른쪽) : Full View
- 강력한 냉각 : 최대 4 개의 팬 및 2 개의 240mm 라디에이터
- 초소형 다기능 : Micro-ATX 및 Mini-ITX 마더 보드와 호환 가능

中文

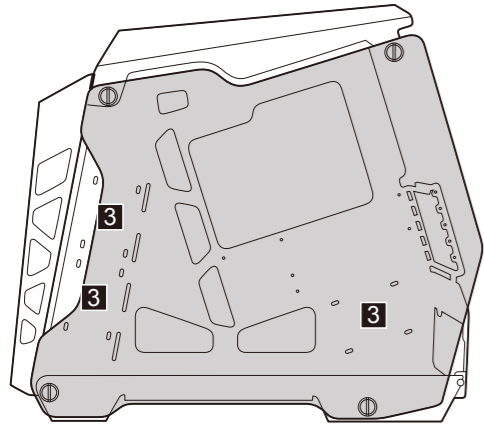
- CNC切割铝合金架构：坚固耐用、造型前卫
- 钢化玻璃侧盖(左/右)：全景透视效果
- 强大散热效果：最高可支援4个风扇与2个240mm水冷散热器
- 体积精巧、高度扩充：支援 Micro-ATX 与 Mini-ITX 主机板

تعليمات التركيب و الأمان:

- عند التركيب أو التفكيك يجب التأكد من أن جميع الأسلاك مفصولة عن الكهرباء.
- يجب اتخاذ الاحترازا ت اللازمة لمنع الصعق الكهربائي.
- يجب ارتداء الملابس المناسبة أثناء تركيب/ تجميع الكمبيوتر.
- يجب تركيب كل قطعة بحذر و بمكانها المناسب.
- من يقوم بعلمية التركيب الشخص المختص فقط.

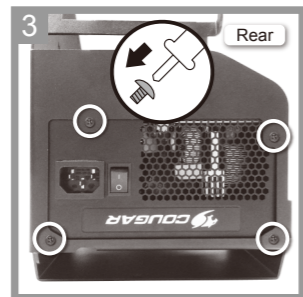
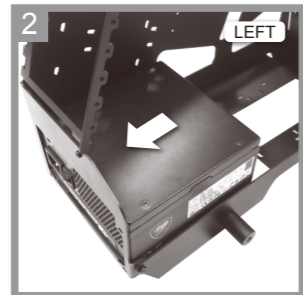
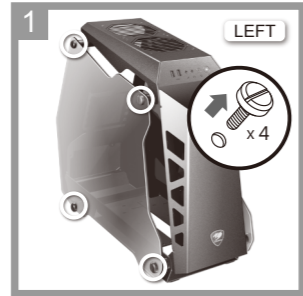


LEFT SIDE

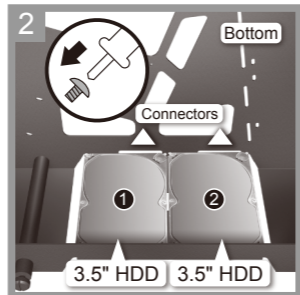


LEFT SIDE

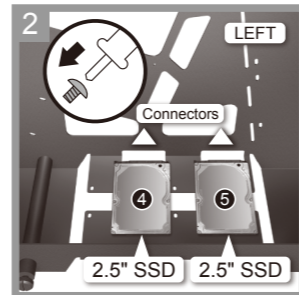
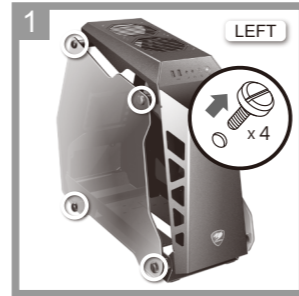
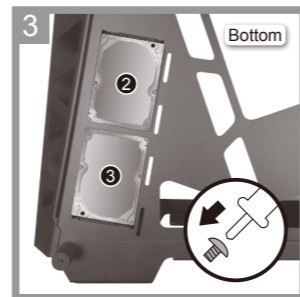
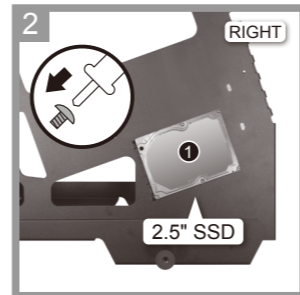
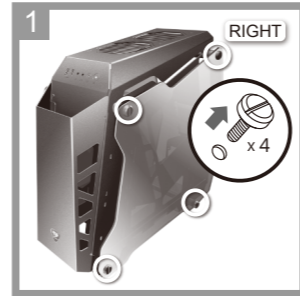
1 Installing the PSU



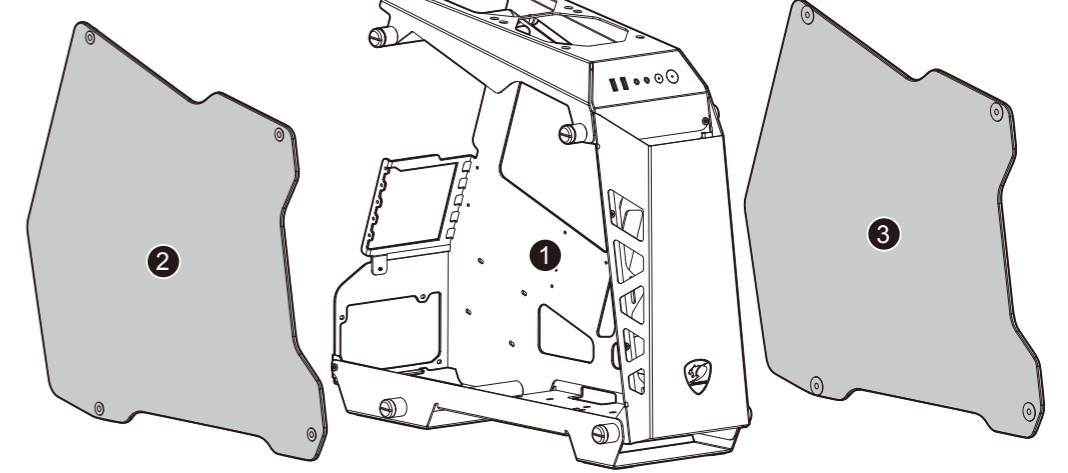
2 Installing 3.5" HDD



3 Installing 2.5"SSD

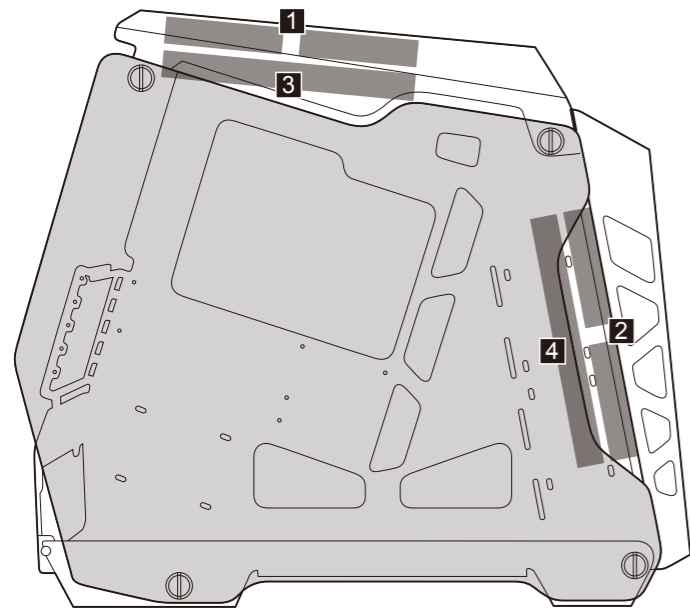


Please confirm that you have all the components below before starting the assembly process.



Accessory Kit

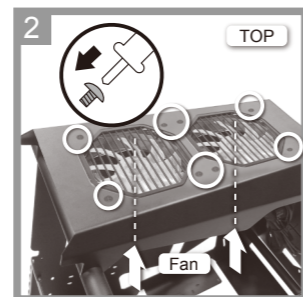
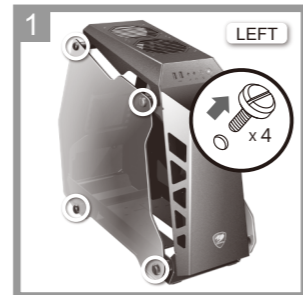
1			3.5" HDD PSU screws	X 12	5			Fan screws	X 16
2			2.5" SSD screws	X 16	6			Standoffs	X 9
3			MBD screws	X 9	7			Cable ties	X 5
4			Part screws	X 9	8			Cable hooks	X 5



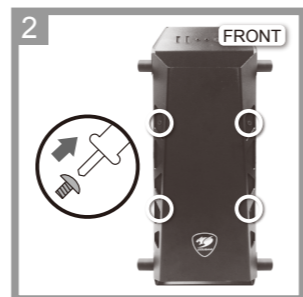
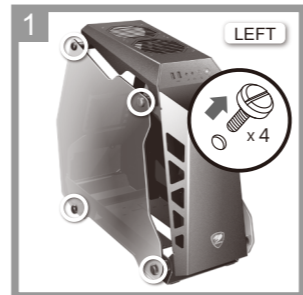
LEFT SIDE

You can adjust the assembly method of water cooling and fans according to your personal preference.

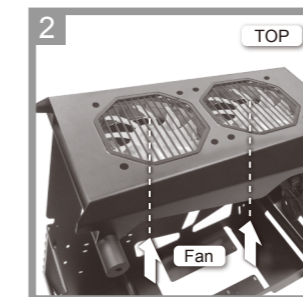
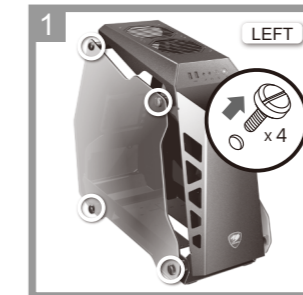
1 Installing the fans (Top)



2 Installing the fans (Front)



3 Installing a water cooler (top / up to 240mm)



4 Installing a water cooler (front / up to 240mm)

