

TIPS & TECHNIQUES

When you cut your hair, you should visualize the head as if it were divided into four sections. Image below shows the different sections. Using proper techniques when moving from one section to the next will help you blend the sections together for professional looking results.

Section 4: Top of the head

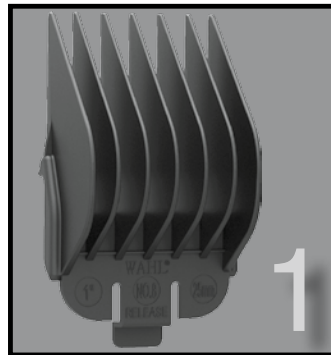
Section 3: The rim or side

Section 2: Under the rim of the head

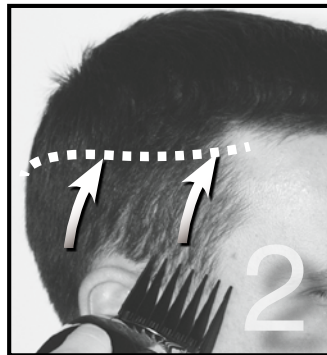
Section 1: The neckline

- The first time you cut hair, cut only a small amount of hair until you become accustomed to the length of hair each attachment guard provides.
- For best results, hair should be dry before using clipper.
- For best results, when cutting hair, go through hair at a slow, even speed. Don't force the clipper through the hair.
- For best results, go through the hair against the direction of your hair's growth, so you can catch more hair with the guard.
- The blades on your new clipper should be oiled every few haircuts.

STEP-BY-STEP GUIDE FOR CUTTING HAIR

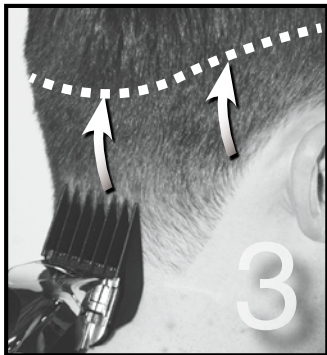


1. Comb hair and remove tangles. Attach the largest attachment guard to the clipper.



2. Start at hairline on side of head and cut up to middle of head.

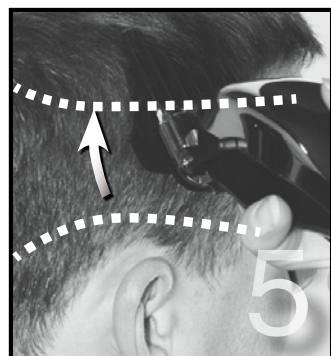
Note: If cut hair is too long repeat with next smaller guard.



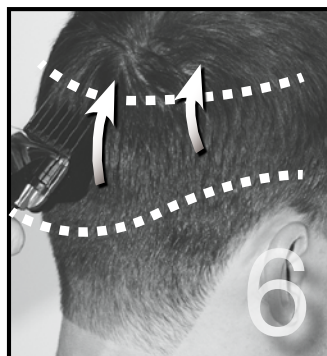
3. Continue around head repeating step 2.



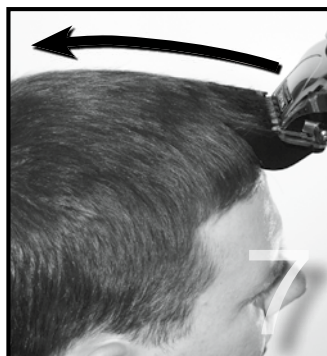
4. You are now ready to cut the middle portion of the hair.



5. Use the attachment guard with the next highest number than in step 3. Example: If you used a #6 guard in **step 3**, select guard #7.



6. Continue cutting around middle portion of head as in steps 2 and 3.



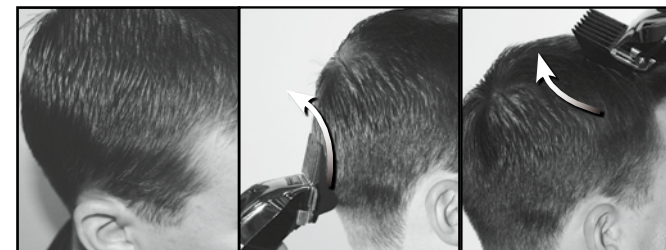
7. For cutting top of head, use the guard with the next highest number than in **step 6**. Start at front bang area.



8. Cut across top of head. Comb hair on entire head to assess if further cutting is necessary.

BLENDING

When you want to blend from one section to the next, you will need to practice moving the clipper in an upward rocking motion. This motion will leave the hair slightly longer where the clipper pulls away from the scalp, enabling you to blend between the sections and achieve a smooth transition from one length of hair to the next. This technique will enhance the appearance of your haircuts.



1. Blend out any cut lines.
2. Using a rocking motion, blend out the middle cut line.
3. Using the guard used in **step 8** repeat blending the top outline as needed.

OUTLINING



1. No attachments needed. Start with the sideburns.
2. Continue around ear as shown.
3. Trim neckline as shown.

WARRANTY

2-YEAR LIMITED WARRANTY - CORDED CLIPPER / BATTERY TRIMMER

Valid in U.S.A. Only

If your Wahl product fails to operate satisfactorily within two (2) years from the date of original purchase or receipt as a gift, Wahl will, at our option, repair or replace it and return it to you FREE OF CHARGE.

Do not return this product to store where purchased. Products needing repair under this warranty should be returned with postage prepaid to: **Wahl Clipper Corp. Attn: Repair Department - 3001 Locust Street, Sterling, Illinois 61081**

Include a note describing the defect and the date of original purchase or receipt as a gift (if in warranty). Products out of warranty will be repaired at our standard repair charges.

This warranty is void and no repair or replacement will be made under this warranty or otherwise if: (1) The product is modified in any manner or repaired by anyone other than Wahl Clipper Corporation or Wahl authorized service center. (2) The product has been used commercially or subjected to unreasonable use.

This warranty gives you specific legal rights and you may also have other rights which may vary from state to state. No other written express warranty is given. Any implied warranty, including any warranty of merchantability which may arise from purchase or use, is limited to the year period provided in this express warranty. Some states may not allow such limitation, so it may not apply to you. No responsibility is assumed for incidental or consequential damages of any type, or for the use of unauthorized attachments. Some states may not allow the exclusion or limitation of incidental or consequential damages, so the limitation or exclusion may not apply to you. Outside U.S.A., check with store for Wahl authorized distributor's warranty.

Please register your Wahl Clipper online at: grooming.wahl.com

Purchase Confirmation- With the information you provide, we confirm the date of purchase of your product. This confirmation is of benefit to you, especially if your original proof of purchase is lost.

Proof of Ownership- Your UPC number, item number and other information will be kept in our files for up to ten years.

Part #56527-300 v.2017.01
© 2017 WAHL CLIPPER CORPORATION
P.O. Box 578, Sterling, Illinois 61081 USA
Printed in China

Question? contact us at:
www.grooming.wahl.com or 1-800-767-9245

HOME HAIRCUTTING

PERFORMER[®]
BY WAHL[®]

QUICK[®]
BY WAHL[®]



CLIPPER MAINTENANCE

CLEANING:

To remove hair from between the blades, use the cleaning brush provided. **DO NOT USE WATER TO CLEAN THE BLADES.** For best results, after brush cleaning the blades, add Wahl clipper oil to the blades.

OIL:

The blades on your new clipper should be oiled every few haircuts. Place a few drops of Wahl Clipper Oil on the teeth (front) as well as at the back side of the blade. Use only Wahl Clipper oil (a small bottle is included in this kit, additional oil can be purchased separately, see www.grooming.wahl.com for details). **DO NOT USE HAIR OIL, GREASE, OR ANY OIL MIXED WITH KEROSENE OR ANY SOLVENT.**

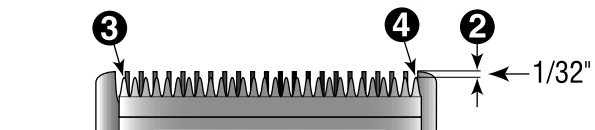


ALIGNING CLIPPER BLADES:

Your Wahl clipper blades were oiled and aligned before leaving our factory. Blades may need to be realigned if they have been bumped or removed for cleaning. To determine if realignment is necessary, compare your clipper blades with this sketch.

- If your clipper has a taper lever, position the lever in the closest cut (up) position.
- End of top blade teeth should be approximately 1/32-inch (.64 mm) back from bottom blade.
- Extreme left-hand tooth of top blade must be covering or to the left of the first small tooth of bottom blade.
- Extreme right-hand tooth of top blade must be touching the big tooth on the bottom blade.

If blade alignment is incorrect, add a few drops of Wahl Clipper Oil to the blades, turn clipper "ON" for a few moments, turn "OFF" and unplug. Loosen screws slightly and adjust. Tighten screws after blades are aligned. Other than blades, this clipper has no user-serviceable parts.



IF YOUR CLIPPER IS TOO NOISY:

(A) Oil blades as directed in previous section of this instruction booklet.

(B) You can reduce the "clatter sound" by adjusting the power screw. The power screw was adjusted for peak efficiency before leaving the factory. However, if voltage in your home is too high or low, the clipper power screw may need adjustment.

ADJUST POWER SCREW TO REDUCE CLIPPER NOISE (excessive clattering):

- Turn your clipper "ON"
- Use the end of the cleaning brush or a screwdriver to turn power screw in a COUNTER CLOCKWISE direction until clatter goes away.

ADJUST POWER SCREW FOR MAXIMUM POWER SETTING:

- Turn your clipper "ON"
- Use the end of the cleaning brush or a screwdriver to turn power screw in a CLOCKWISE direction until you hear a clattering noise.
- Then turn power screw in opposite direction (COUNTER CLOCKWISE) until clattering stops.

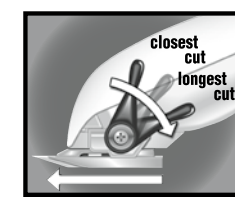
CORD:

The cord should not be used to pull the clipper. Since freedom of movement needs to be maintained, care should be used to keep the cord untwisted and unobstructed.

YOUR CLIPPER HAS A POLARIZED PLUG: To reduce the risk of electric shock, this appliance has a polarized plug (one plug blade is wider than the other). This plug fits in a polarized outlet only one way. In the event the plug doesn't fit fully in the outlet, reverse the plug. **DO NOT CHANGE THE PLUG IN ANY WAY.**

TAPER LEVER:

The taper lever adds versatility to your clipper by allowing you to gradually change the closeness of your cut. (Up position = closest cut; Down position = longest cut). Should the blades become jammed with hair, move the taper lever up and down several times. This will help free up the blades.



EASY-TO-USE ATTACHMENT GUARDS

Some kits do not include all size Wahl guards.

- #1/2 - (15mm) 1/16"
- #1 - (3mm) 1/8"
- #1 1/2 - (45mm) 3/16"
- #2 - (6mm) 1/4"
- #3 - (10mm) 3/8"
- #4 - (13mm) 1/2"
- #5 - (16mm) 5/8"
- #6 - (19mm) 3/4"
- #7 - (22mm) 7/8"
- #8 - (25mm) 1"
- Right Ear Taper
- Left Ear Taper

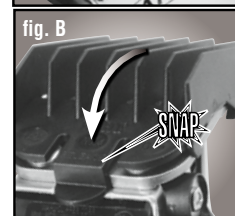
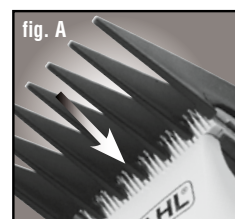


- Attachment guards help you cut hair to a desired length by keeping the blades at set distance from the skin helping ensure an even hair length when cutting hair with a clipper. For reference, each guard is numbered and also lists what the length of the hair will be after being cut.
- Attachment guard sizes vary. Always start with a longer length guard (you can always use a shorter length guard if the length is not short enough).
- The first time you cut hair, cut only a small amount of hair until you become accustomed to the length of hair each attachment guard provides.

ADDING GUARDS: Pictured in fig A & fig B

Before adding guards, make sure the on/off switch is turned to the "0" or "OFF" position.

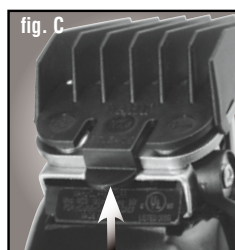
- While holding at a slight angle, place the attachment guard onto the clipper so the tips of the blade rests into the slots of the guard fingers. (fig A)
- Using your thumb, push down on the guard, where the guard size number is located, until you hear a "SNAP". (fig B)



REMOVING GUARDS: Pictured in fig C

Before removing guards, make sure the on/off switch is turned to the "0" or "OFF" position.

- While holding the top of attachment guard, place your thumb on the underside of the attachment guard tab. Push up on tab to remove guard from clipper. (fig C)



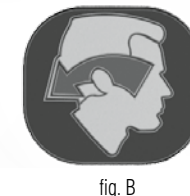
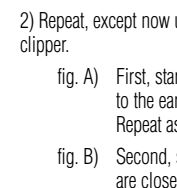
EARS

Some kits do not include ear taper guards.

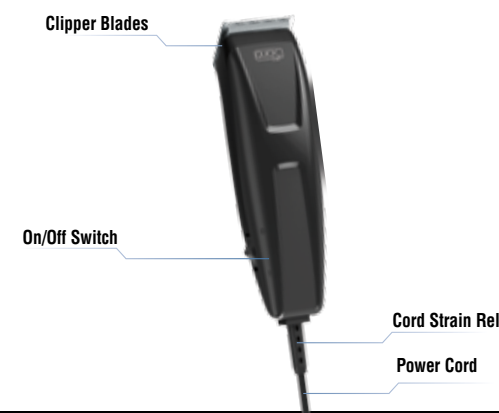
To achieve a "tapered" cut around the ears, use the left and right tapered attachment guards

- Attach the "R" RIGHT attachment guard to the clipper.

- First, starting behind the RIGHT ear (so shorter portion of guard fingers are closest to the ear), move the clipper upward and around towards the front side of the ear. Repeat as needed.
- Second, starting on the front of the LEFT ear (so shorter portion of guard fingers are closest to the ear), move the clipper upward and around towards the back side of the ear. Repeat as needed.



YOUR NEW CLIPPER



YOUR NEW BATTERY TRIMMER

BATTERY INSTRUCTIONS

Select clipper kits include a battery trimmer, your kit may or may not include a trimmer.

- Remove battery cover from trimmer by pushing in and back on the plastic door in the direction of the arrow.
- IMPORTANT: Be sure to insert the negative (-) end of each battery first, so that it depresses the spring at the top of the battery compartment. Then slide the positive (+) end into position. Do not allow the negative terminal clips to bend and cut the casing of the batteries. Use alkaline batteries with your Wahl trimmer. Alkaline batteries will provide the longest operating time before battery replacement is needed. Trimmer should run approximately three hours on alkaline batteries.
- Replace battery cover to its original position.
- Move switch to "ON" position to use.
- To maximize battery life, trimmer should be shut "OFF" immediately after using.

