

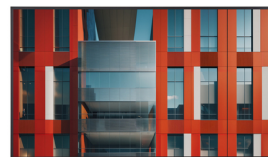
## Sharp ME652 Pantalla plana de señalización digital 165.1 cm (65") LCD 450 cd / m² 4K Ultra HD Negro Android 18/7

Marca : Sharp

Código del producto: 60005924

Nombre del producto : ME652

Sharp ME652. Diseño de producto: Pantalla plana de señalización digital. Diagonal de la pantalla: 165.1 cm (65"), Tecnología de visualización: LCD, Resolución de la pantalla: 3840 x 2160 Píxeles, Brillo de pantalla: 450 cd / m², Tipo HD: 4K Ultra HD. Horas de funcionamiento (horas/días): 18/7. Sistema operativo instalado: Android. Color del producto: Negro



Display		Design	
Panel type	IPS	Screen shape	Flat
LED backlight	✓	VESA mounting *	✓
LED backlighting type	Direct-LED	Panel mounting interface	600 x 400 mm
Display diagonal *	165.1 cm (65")	Performance	
Display technology *	LCD	Purpose *	Universal
Display resolution *	3840 x 2160 pixels	Operating hours (hours/days)	18/7
Display brightness *	450 cd/m²	HDCP	✓
HD type *	4K Ultra HD	Power	
Touchscreen *	✗	Energy efficiency class (SDR)	G
Native aspect ratio	16:9	Energy efficiency class (HDR)	G
Response time	8 ms	Energy consumption (SDR) per 1000 hours	144 kWh
Contrast ratio (typical)	1200:1	Energy consumption (HDR) per 1000 hours	145 kWh
Viewing angle, horizontal	178°	AC input voltage	100 - 240 V
Viewing angle, vertical	178°	AC input frequency	50 - 60 Hz
Display number of colours	1.073 billion colours	Energy efficiency scale	A to G
Display diagonal (metric)	163.9 cm	Computer system	
Horizontal scan range	15 - 135 kHz	Internal memory	4 GB
Vertical scan range	23 - 76 Hz	Internal storage capacity	32 GB
High Dynamic Range (HDR) supported	✓	Operating system installed	Android
High Dynamic Range (HDR) technology	High Dynamic Range 10 (HDR10), Hybrid Log-Gamma (HLG)	Operating system version	Android 13
Native refresh rate	60 Hz	Video formats supported	H.264, MPEG2, HEVC/H.265, MP4, MPEG1
Haze rate	25%	Audio formats supported	MP3
Ports & interfaces		Weight & dimensions	
HDMI ports quantity *	6	Display width	1463.3 mm
HDMI input ports quantity	6	Display depth	68 mm
DVI port *	✗	Display height	838.2 mm
USB port *	✓	Display weight	23.9 kg
USB ports quantity	5	Packaging data	
USB 2.0 Type-B ports quantity	3	Package width	1628 mm
USB 3.2 Gen 1 (3.1 Gen 1) Type-C ports quantity	2		
Ethernet LAN *	✓		

Ports & interfaces		Packaging data	
Ethernet LAN (RJ-45) ports	1	Package depth	185 mm
Ethernet LAN data rates	100 Mbit/s	Package height	942 mm
RS-232 interface	✓	Package weight	34.5 kg
Audio		Packaging content	
Built-in speaker(s) *	✓	Batteries included	✓
Number of built-in speakers	2	Cables included	HDMI, Power
RMS rated power	20 W	Operational conditions	
Design		Operating temperature (T-T)	0 - 40 °C
Product design *	Digital signage flat panel	Operating relative humidity (H-H)	20 - 80%
Orientation	Horizontal/Vertical	Storage temperature (T-T)	-20 - 60 °C
Product colour *	Black	Storage relative humidity (H-H)	10 - 90%



4550556122535

Disclaimer. The information published here (the "Information") is based on sources that can be considered reliable, typically the manufacturer, but this Information is provided "AS IS" and without guarantee of correctness or completeness. The Information is only indicative and can be changed at any time without notification. No rights can be based on the Information. Suppliers or aggregators of this Information do not accept any liability with regard to the content of (web)pages and other documents, including its Information. The publisher of the Information can not be held liable for the content of 3rd party websites that are linking this Information or are linked to from this Information. You as the User of the Information are solely responsible for the choice and usage of this Information. You are not entitled to transfer, copy or otherwise multiply or distribute the Information. You are obliged to follow the directions of the copyright owner(s) with regard to the use of the Information. Exclusively Dutch law is applicable. With regard to price and stock data on the site, the publisher followed a number of starting points, which are not necessarily relevant for your private or business circumstances. Therefore, the price and stock data are only indicative and are subject to changes. You are personally responsible for the way you use and apply this information. As a user of the Information or sites or documents in which this Information is included, you will adhere to standard fair use including avoidance of spamming, ripping, intellectual-property violations, privacy violations, and any other illegal activity.

Publication date: 14-APR-2025. Prints or copies of Information are only valid on the printed Publication date