



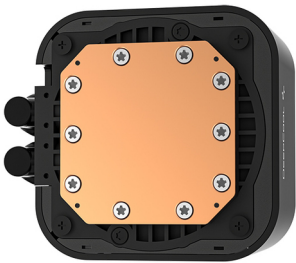
DeepCool LQ240 Procesador Kit de enfriamiento líquido 12 cm Negro 1 pieza(s)

Marca : DeepCool

Código del producto: R-LQ240-BKLSMW-G-1

Nombre del producto : LQ240

DeepCool LQ240. Tipo: Kit de enfriamiento líquido, Diámetro de ventilador: 12 cm, Presión máxima de aire: 3.48 mmH2O. Color del producto: Negro



| Performance | | Power | |
|--------------------------------------|---|------------------------------|-------------------|
| Suitable location * | Processor | Fan power consumption | 2.64 W |
| Type * | Liquid cooling kit | Pump power consumption | 4.2 W |
| Fan diameter | 12 cm | LED voltage | 5 V |
| Supported processor sockets | Intel LGA1851, LGA 1150 (Socket H3), LGA 1151 (Socket H4), LGA 1155 (Socket H2), LGA 1200 (Socket H5), LGA 1700, Socket AM4, Socket AM5 | Pump voltage | 12 V |
| | | Pump current | 350 mA |
| | | Fan voltage | 12 V |
| Noise level (high speed) | 38.71 dB | Fan current | 0.22 A |
| Maximum airflow | 72.04 cfm | LED power consumption (fan) | 2.1 W |
| Maximum air pressure | 3.48 mmH2O | LED power consumption (pump) | 2.4 W |
| Pulse-width modulation (PWM) support | ✓ | Weight & dimensions | |
| Fan noise level (max) | 38.71 dB | Radiator width | 12 cm |
| Fan bearing technology | Hydro bearing | Radiator depth | 28.2 cm |
| Pump connector | 3-pin | Radiator height | 2.7 cm |
| Quantity per pack | 1 pc(s) | Tube length | 41 cm |
| Pump motor speed | 3400 RPM | Pump width | 7.6 cm |
| Fan speed (min) | 600 RPM | Pump depth | 8.9 cm |
| Fan speed (max) | 2400 RPM | Pump height | 6.4 cm |
| Design | | Weight | 1.53 kg |
| Product colour * | Black | Fan dimensions (W x D x H) | 120 x 120 x 25 mm |
| Radiator material | Aluminum | Packaging content | |
| Number of fans | 2 fan(s) | Package type | Box |
| Number of fan blades | 9 | Mounting kit | ✓ |
| Illumination LED | ✓ | Screws included | ✓ |
| Illumination colour | Multi | CPU bracket(s) | ✓ |
| LED connector type | 3-pin | | |
| Fan connector | 4-pin | | |



6933412729150

Disclaimer. The information published here (the "Information") is based on sources that can be considered reliable, typically the manufacturer, but this Information is provided "AS IS" and without guarantee of correctness or completeness. The Information is only indicative and can be changed at any time without notification. No rights can be based on the Information. Suppliers or aggregators of this Information do not accept any liability with regard to the content of (web)pages and other documents, including its Information. The publisher of the Information can not be held liable for the content of 3rd party websites that are linking this Information or are linked to from this Information. You as the User of the Information are solely responsible for the choice and usage of this Information. You are not entitled to transfer, copy or otherwise multiply or distribute the Information. You are obliged to follow the directions of the copyright owner(s) with regard to the use of the Information. Exclusively Dutch law is applicable. With regard to price and stock data on the site, the publisher followed a number of starting points, which are not necessarily relevant for your private or business circumstances. Therefore, the price and stock data are only indicative and are subject to changes. You are personally responsible for the way you use and apply this information. As a user of the Information or sites or documents in which this Information is included, you will adhere to standard fair use including avoidance of spamming, ripping, intellectual-property violations, privacy violations, and any other illegal activity.

Publication date: 03-APR-2025. Prints or copies of Information are only valid on the printed Publication date